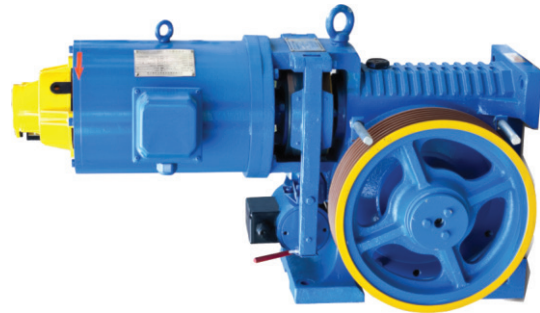


# ▶ TDS-IGD10

## ELEVATOR TRACTION MACHINE

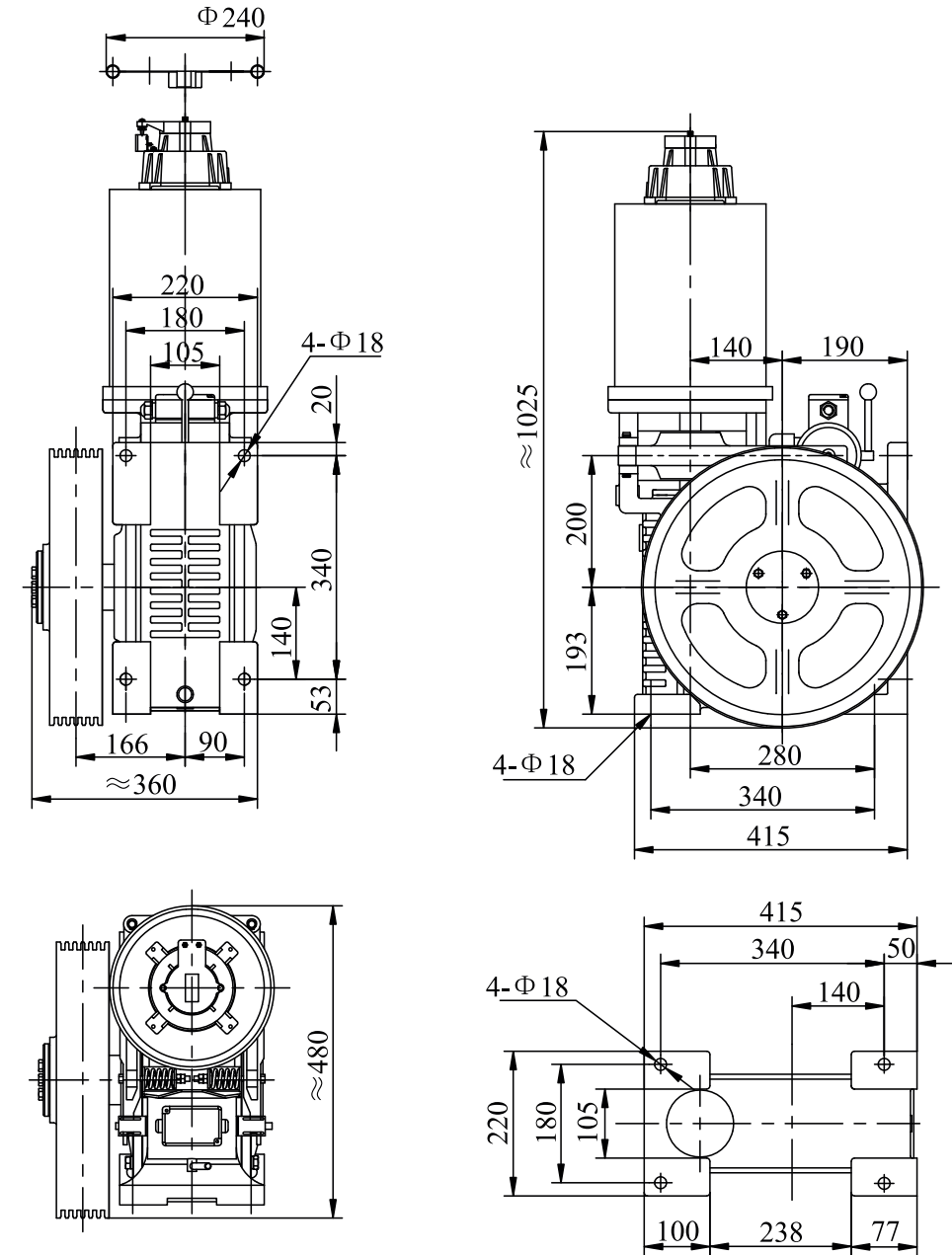
Suspension 1 : 1  
 Max.Static Load 2800kg  
 Control VVVF  
 DZE-8E Brake DC110V 1A  
 AC220V 1.2A/0.6A  
 Weight 285kg  
 Horizontal type is optional



### ▶ TECHNICAL DATA

Spec	Capacity (Kg)	Speed	Power (Kw)	Pole	Gear Ratio	Power Source (Vac)	Current (A)	Motor Speed	Sheave Dia (mm)	Rope Dia (mm)	No Of Ropes (#)	Pitch
TDS-IGD10-51P0-10MM	544	1.0	5.5	4	32:1	380	11.2	1440	425	10	5	15
TDS-IGD10-51P0-10MM	544	1.0	5.5	4	41:1	380	11.2	1440	520	13	3	20
TDS-IGD10-51P0-10MM	544	1.5	7.5	4	41:2	380	15.2	1440	425	10	4	16

### ▶ MACHINE'S DIMENSION



The dimension of mounting hole

### REMARK

- 1.As shown is left sheave type, right sheave type is optional.
- 2.If the machine matches with motor  $\geq 7.5Kw$ , the brake with the excitation device and the brake voltage is AC220V, the user should use a single support voltage to control the brake.