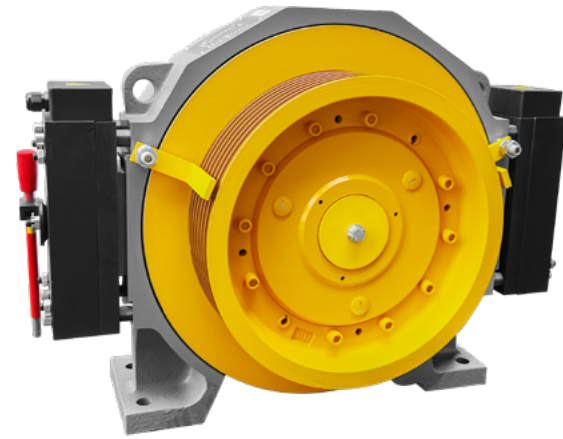


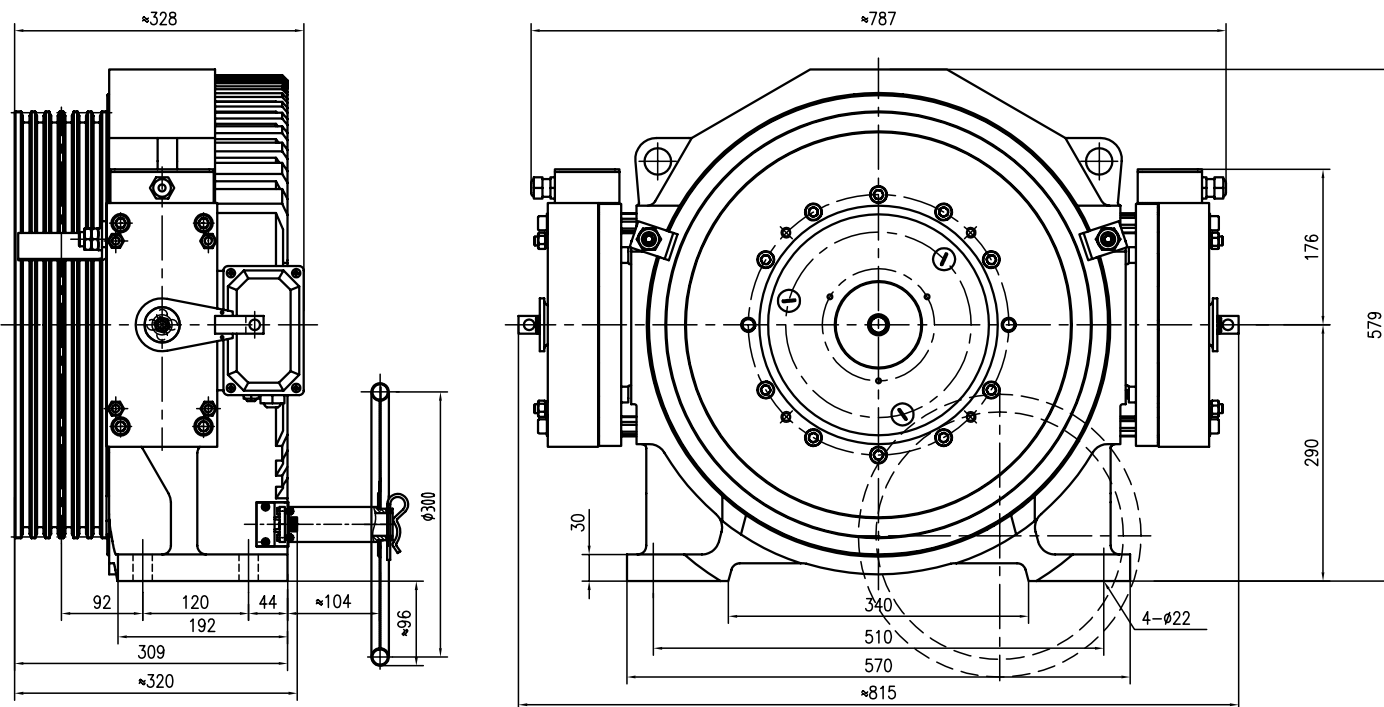
TDS-IGL21L



ELEVATOR TRACTION MACHINE

Suspension	2 : 1
Voltage	380V
Pole	32
Rating	S5 (40%)
INS. Class	F
IP Code	IP41
FZD12C Brake	DC110V 2x1.5A
Max. Static Load	3500kg
Weight	350kg

DIMENSIONS



TECHNICAL DATA

Spec	Load (kg)	Lift Speed (m/s)	Sheave Dia.(mm)	Rope Groove (mm)	Current (A)	Torque (Nm)	Rated Speed (rpm)	Frequency (Hz)	Power (kW)
TDS-IGL21L-82P0-10MM	884	2.0	φ480	5×φ10×16	22.3	592	159	42.4	9.9
TDS-IGL21L-82P5-10MM		2.5		28.4	592	200	53.3	12.4	
TDS-IGL21L-102P0-10MM	1088	2.0	φ480	6×φ10×16	30	780	159	42.4	13
TDS-IGL21L-102P5-10MM		2.5			35.6	780	200	53.3	16.3
TDS-IGL21L-111P0-10MM	1156	1.0	φ400	6×φ10×16	17	750	96	25.6	7.5
TDS-IGL21L-111P5-10MM		1.5			26	750	144	38.4	11.3
TDS-IGL21L-111P6-10MM		1.6			26	750	153	40.8	12
TDS-IGL21L-111P7-10MM	1292	1.75	φ400	6×φ10×16	28	750	167	44.5	13.1
TDS-IGL21L-112P0-10MM		2.0			33	750	192	51.2	15.1
TDS-IGL21L-121P0-10MM	1292	1.0	φ400	6×φ10×16	18.5	810	96	25.6	8.1
TDS-IGL21L-121P5-10MM		1.5			28.3	810	144	38.4	12.2
TDS-IGL21L-121P6-10MM	1292	1.6	φ400	6×φ10×16	28.3	810	153	40.8	13
TDS-IGL21L-121P7-10MM		1.75			30.3	810	167	44.5	14.2
TDS-IGL21L-122P0-10MM	2.0	35.6	810	192	51.2	16.3			

REMARK

For machine room less, the standard configuration of this machine does not include manual brake release. Customers are required to provide their own electric brake release device. The manual brake release is optional to provide if the customer need it.