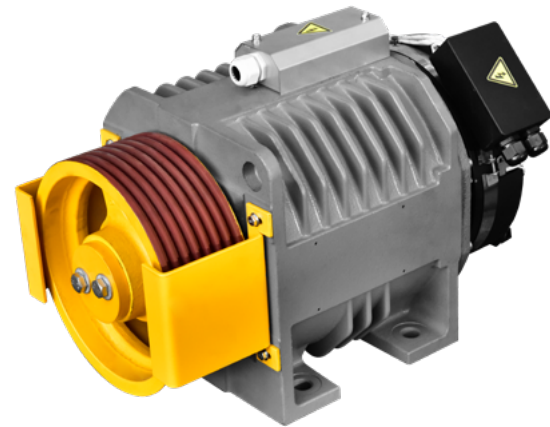


# TDS-RGL00



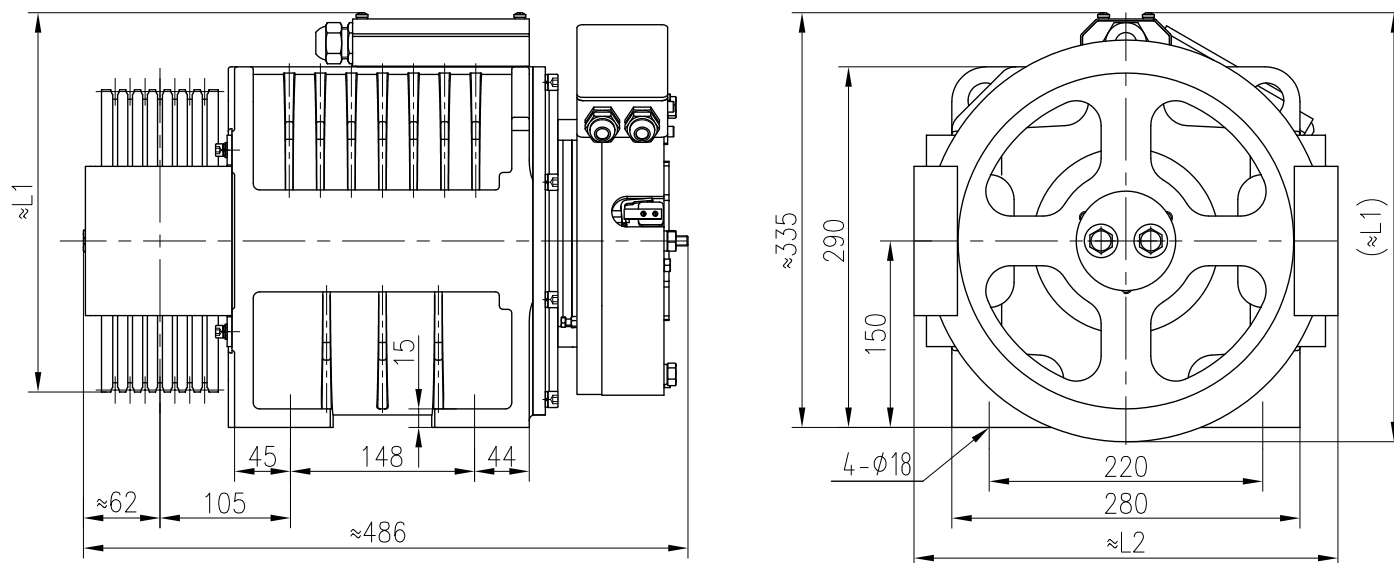
## ELEVATOR TRACTION MACHINE

Suspension	2 : 1
Voltage	380V
Pole	20
Rating	S5 (40%)
INS. Class	F
IP Code	IP41
PZ300C Brake	DC110V 1.9A
Max. Static Load	1800kg
Weight	140kg

## TECHNICAL DATA

Spec	Load (kg)	Lift Speed (m/s)	Sheave Dia.(mm)	Rope Groove (mm)	Current (A)	Torque (Nm)	Rated Speed (rpm)	Frequency (Hz)	Power (kW)	L1	L2
TDS-RGL00-41P0B-6MM		1.0			7.3	175	159	26.5	3		
TDS-RGL00-41P5B-6MM	408	1.5	Φ240	5×Φ6.5×12	11	175	239	39.8	4.5	305	260
TDS-RGL00-41P6B-6MM		1.6			11.8	175	255	42.5	4.7		
TDS-RGL00-41P7B-6MM		1.75			11.8	175	279	46.5	5.1		
TDS-RGL00-41P0C-8MM		1.0			8.3	240	120	20	3		
TDS-RGL00-41P5C-8MM	408	1.5	Φ320	4×Φ8×12	10.8	240	179	29.8	4.5	345	345
TDS-RGL00-41P6C-8MM		1.6			12.5	240	192	32	4.8		
TDS-RGL00-41P7C-8MM		1.75			12.5	240	209	34.8	5.3		

## DIMENSIONS



### REMARK

The standard configuration of this machine does not include manual brake release. Customers are required to provide their own electric brake release device.

The manual brake release is optional to provide if the customer need it.