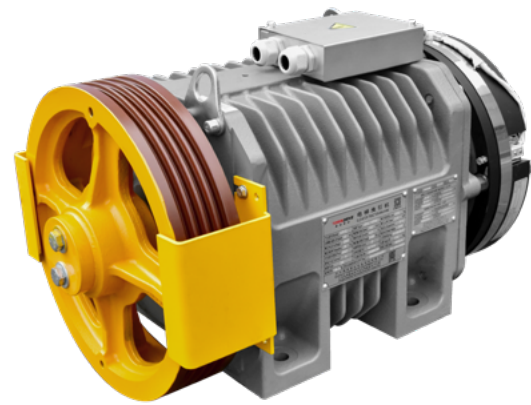


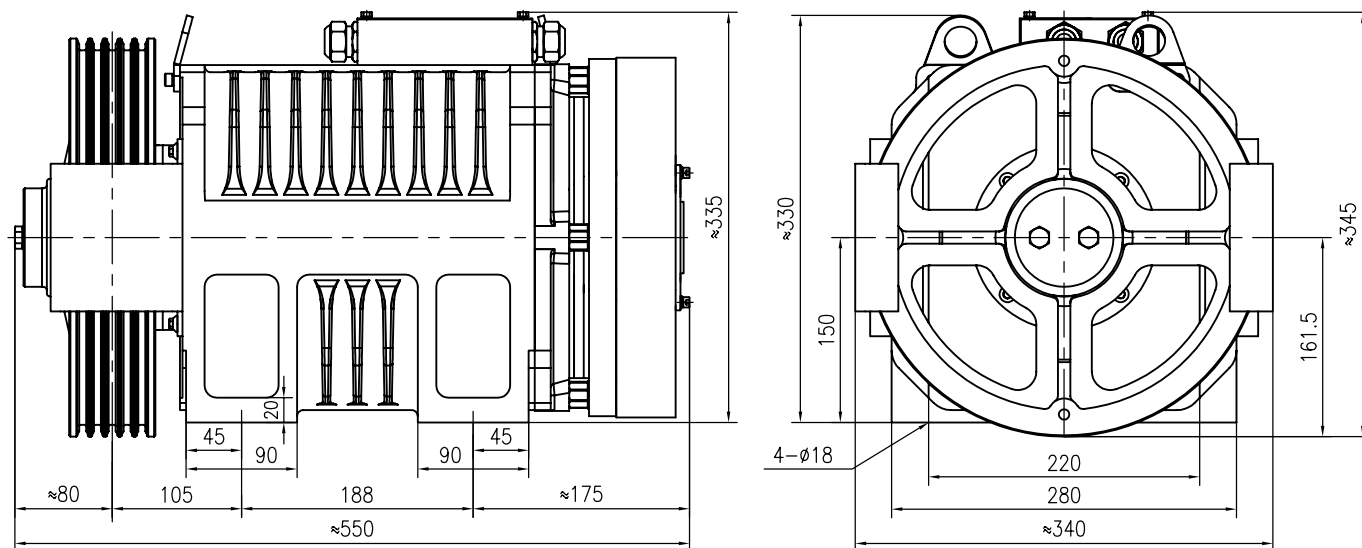
TDS-RGL15



ELEVATOR TRACTION MACHINE

Suspension	2 : 1
Voltage	380V
Pole	20
Rating	S5 (40%)
INS. Class	F
IP Code	IP41
PZ1000B Brake	DC110V 2x1.41A
Max. Static Load	2000kg
Weight	175kg

DIMENSIONS



TECHNICAL DATA

Spec	Load (kg)	Lift Speed (m/s)	Sheave Dia.(mm)	Rope Groove (mm)	Current (A)	Torque (Nm)	Rated Speed (rpm)	Frequency (Hz)	Power (kW)
TDS-RGL15-51P0-8MM		1.0			9.5	275	120	20	3.5
TDS-RGL15-51P5-8MM	544	1.5	∅320	5×∅8×12	12.9	290	179	29.8	5.4
TDS-RGL15-51P6-8MM		1.6			14.6	290	192	32	5.8
TDS-RGL15-51P7-8MM		1.75			14.6	290	209	34.8	6.3
TDS-RGL15-61P0-8MM		1.0			11	318	120	20	4
TDS-RGL15-61P5-8MM	630	1.5	∅320	5×∅8×12	14.9	336	179	29.8	6.3
TDS-RGL15-61P6-8MM		1.6			18	336	192	32	6.8
TDS-RGL15-61P7A-8MM		1.75			18	336	209	34.8	7.4

REMARK

The standard configuration of this machine does not include manual brake release. Customers are required to provide their own electric brake release device.

The manual brake release is optional to provide if the customer need it.