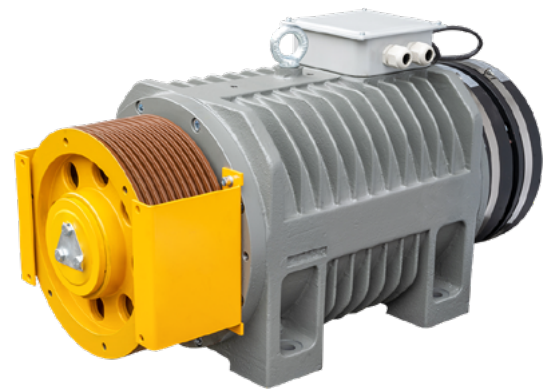


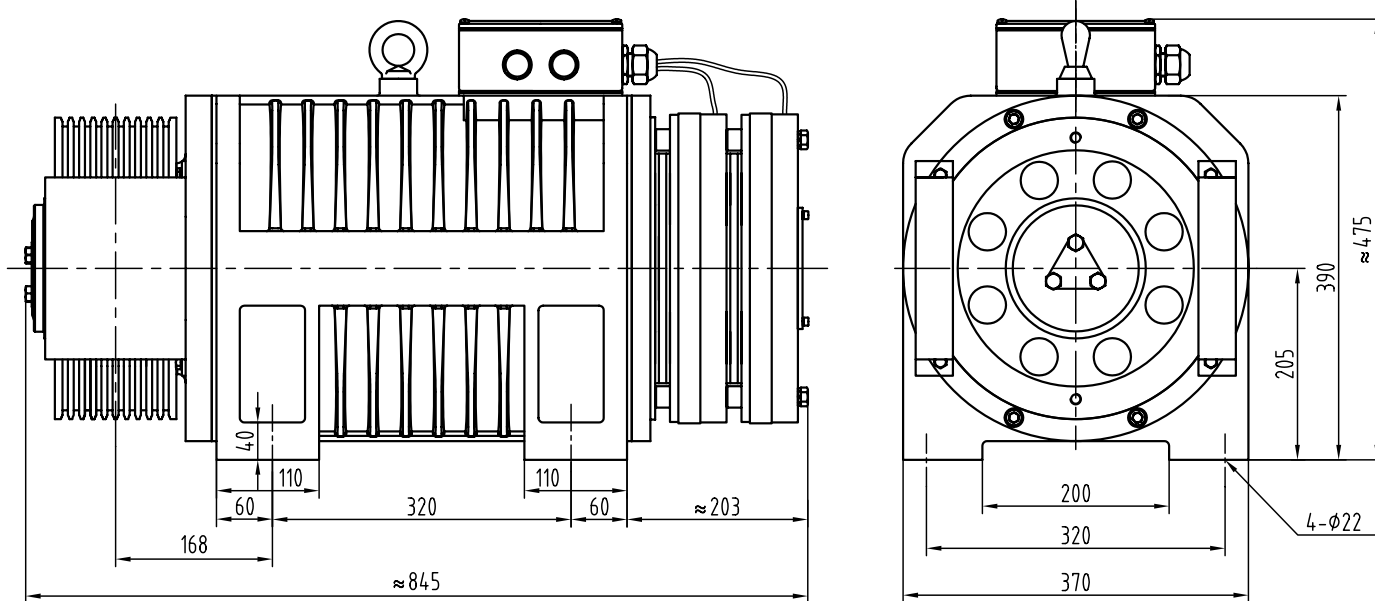
TDS-RGL30



ELEVATOR TRACTION MACHINE

Suspension	2 : 1
Voltage	380V
Pole	20
Rating	S5 (40%)
INS. Class	F
IP Code	IP41
SPZ800B Brake	DC110V 2x1.5A
Max. Static Load	4500kg
Weight	455kg

DIMENSIONS



TECHNICAL DATA

Spec	Load (kg)	Lift Speed (m/s)	Sheave Dia.(mm)	Rope Groove (mm)	Current (A)	Torque (Nm)	Rated Speed (rpm)	Frequency (Hz)	Power (kW)
TDS-RGL30-131P0-8MM		1.0			22.8	735	119	19.9	9.2
TDS-RGL30-131P5-8MM		1.5			33	735	179	29.8	13.8
TDS-RGL30-131P6-8MM	1360	1.6	φ320	9×φ8×12	33	735	192	32	14.8
TDS-RGL30-131P7-8MM		1.75			36.8	735	209	34.8	16.1
TDS-RGL30-132P0-8MM		2.0			41.5	735	239	39.8	18.4
TDS-RGL30-161P0-8MM		1.0			27	870	119	19.9	10.8
TDS-RGL30-161P5-8MM		1.5			39	870	179	29.8	16.3
TDS-RGL30-161P6-8MM	1600	1.6	φ320	10×φ8×12	39	870	192	32	17.5
TDS-RGL30-161P7-8MM		1.75			43.5	870	209	34.8	19
TDS-RGL30-162P0-8MM		2.0			49	870	239	39.8	21.8

REMARK

This machine does not include manual brake release. Customers are required to provide their own electric brake release device.