

# TDS-IGL60

## ELEVATOR TRACTION MACHINE

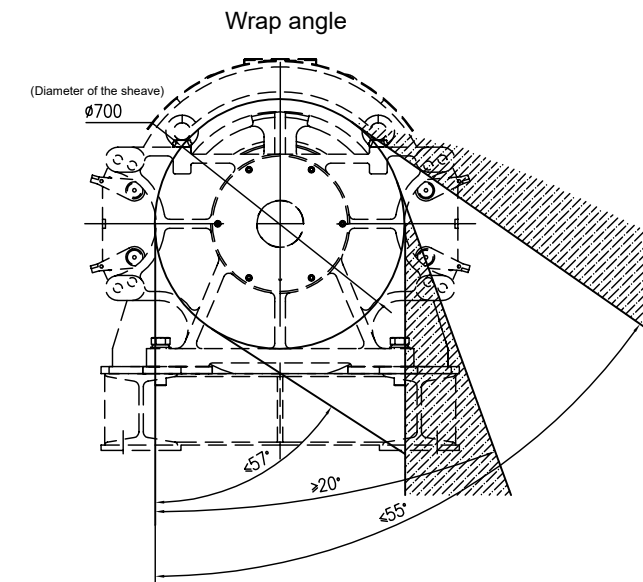
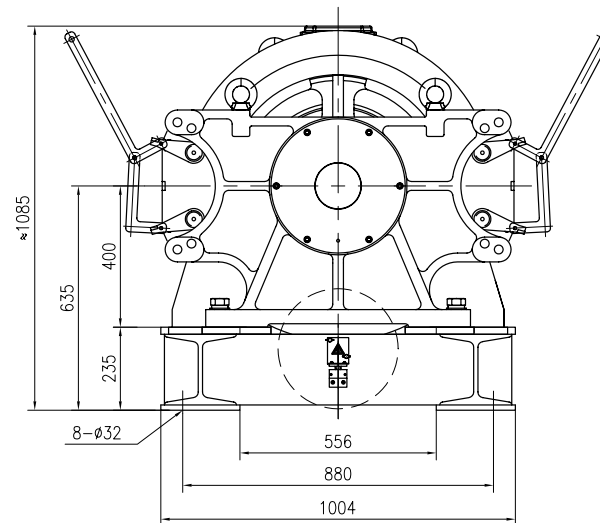
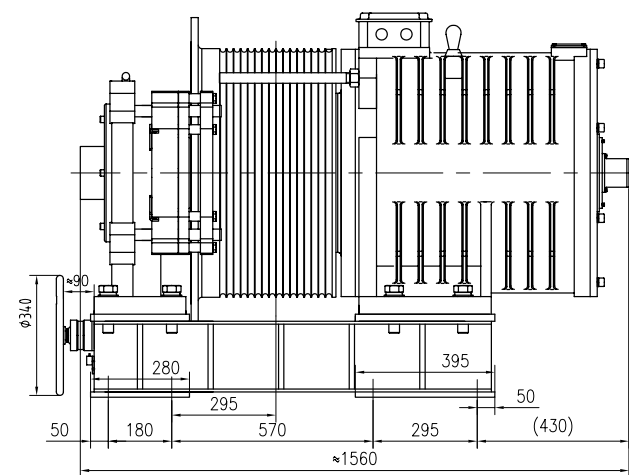
Suspension	1 : 1
Voltage	380V
Pole	24
Rating	S5 (60%)
INS. Class	F
IP Code	IP41
PZD360 Brake	DC110V 2x2.2A
Max. Static Load	36000 kg
Weight	3000 kg



## TECHNICAL DATA

Spec	Load (kg)	Lift Speed (m/s)	Sheave Dia.(mm)	Rope Groove (mm)	Double Roping	Current (A)	Torque (Nm)	Rated Speed (rpm)	Frequency (Hz)	Power (kW)
TDS-IGL60-165P0-16MM-1		5.0				123	3750	137	27.4	53.9
TDS-IGL60-166P0-16MM-1		6.0				141	3750	164	32.8	64.6
TDS-IGL60-167P0-16MM-1	1600	7.0	φ 700	14×φ 16×20	YES	165	3750	192	38.4	75.4
TDS-IGL60-168P0-16MM-1		8.0				195	3750	218	43.6	85.6
TDS-IGL60-205P0-16MM-1		5.0				147	4700	137	27.4	67.2
TDS-IGL60-206P0-16MM-1	2000	6.0	φ 700	16×φ 16×20	YES	174	4700	164	32.8	80.6
TDS-IGL60-207P0-16MM-1		7.0				213	4700	192	38.4	94
TDS-IGL60-208P0-16MM-1		8.0				238	4700	218	43.6	107

## DIMENSIONS



Note: the angle of the wire rope is around the range shown above, avoiding the shadow part.

## REMARK

1. The machine can't be configured with the remote brake release.