

TORINDRIVE

**GEARLESS
CATALOG**



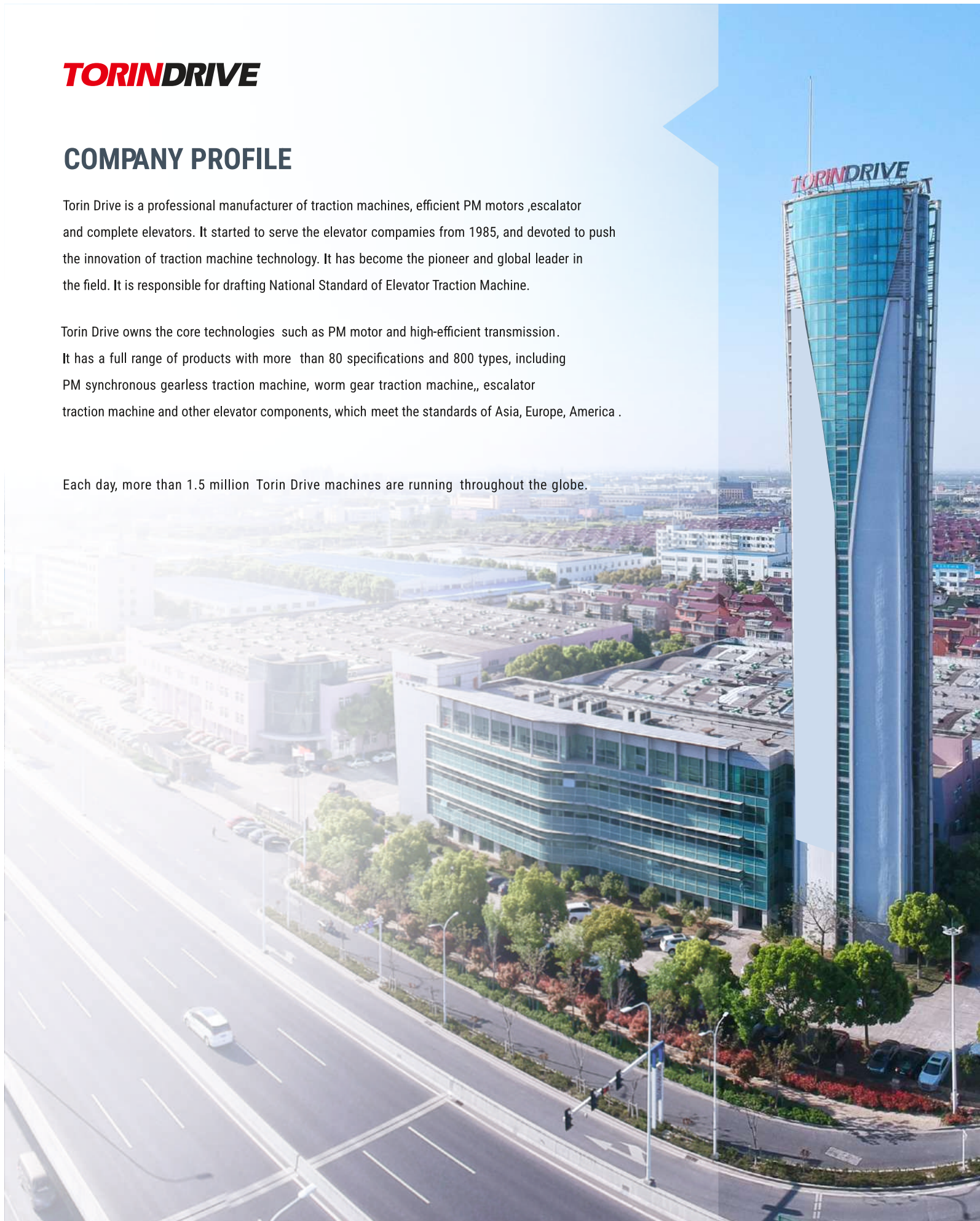
2025

COMPANY PROFILE

Torin Drive is a professional manufacturer of traction machines, efficient PM motors, escalator and complete elevators. It started to serve the elevator companies from 1985, and devoted to push the innovation of traction machine technology. It has become the pioneer and global leader in the field. It is responsible for drafting National Standard of Elevator Traction Machine.

Torin Drive owns the core technologies such as PM motor and high-efficient transmission. It has a full range of products with more than 80 specifications and 800 types, including PM synchronous gearless traction machine, worm gear traction machine, escalator traction machine and other elevator components, which meet the standards of Asia, Europe, America.

Each day, more than 1.5 million Torin Drive machines are running throughout the globe.



CONTENTS

> TDS-IGL SERIES

TDS-IGL15
TDS-IGL21N
TDS-IGL21L
TDS-IGL21M
TDS-IGL21XL
TDS-IGL21TL
TDS-IGL36
TDS-IGL54
TDS-IGL55
TDS-IGL60

> TDS- IBM SERIES (BELT)

TDS-IBM00
TDS-IBM05

> TDS-RGL SERIES

TDS-RGL00
TDS-RGL00N
TDS-RGL15
TDS-RGL21N
TDS-RGL25N
TDS-RGL35
TDS-RGL40

> HOME LIFT

TDS-HGL00
TDS-HBM00
TDS-HBM00C
TDS-HGL20
TDS-SDM05
TDS-SDM10

OUR STANDARD COLOURS

RAL5017

▶ BLUE

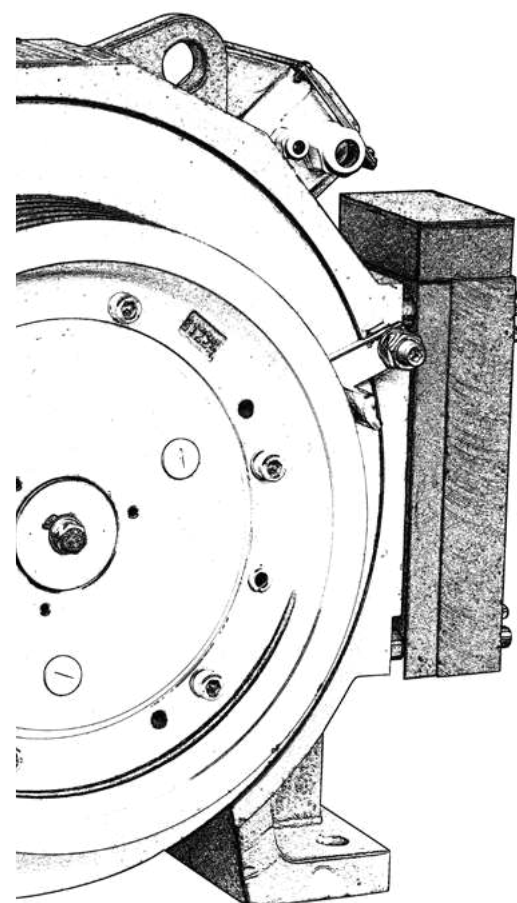
RECOMMENDATION (TDS-IGL SERIES)

Capacity	1.0	1.5	1.7	2.0	2.5	3.0	4.0	5.0-8.0				
408	TDS-IGL15											
544	TDS-IGL15											
680	TDS-IGL15 or TDS-IGL21N		TDS-IGL21N						TDS-IGL21L	TDS-IGL21TL	TDS-IGL54	
884	TDS-IGL21N											
1088	TDS-IGL21N		TDS-IGL21N						TDS-IGL21L	TDS-IGL21TL	TDS-IGL54	
1156	TDS-IGL21N		TDS-IGL21N									
1292	TDS-IGL21L								TDS-IGL21XL	TDS-IGL21TL	TDS-IGL54	
1360	TDS-IGL21L											TDS-IGL21XL
1600	TDS-IGL21XL								TDS-IGL21TL	TDS-IGL54	TDS-IGL60	
2000	TDS-IGL21XL											
2500	TDS-IGL21TL or TDS-IGL36											
3000	TDS-IGL36 or TDS-IGL55											
4000	TDS-IGL55											
5000	TDS-IGL55											

CATALOG

TDS-IGL SERIES

GEARLESS TRACTION MACHINE



TORINDRIVE

CUSTOMER-CENTRIC INNOVATION

GEARLESS MACHINE STANDARD

1. Torin Drive gearless machine Part Number illustration

Example:

<u>TDS-IGL15-</u>	<u>5</u>	<u>1P0-</u>	<u>8mm</u>
Model#	Capacity (544 Kg)	Speed (1 M/S)	Rope Dia

2. All gearless machines are **CE compliant and certified**.
3. All motors are designed for **180 starts per hour at 40 % duty cycle and 2:1 roping**.
4. **TDS-IGL60** Model is designed for **180 starts at 60 % Duty Cycle**.
5. All motors are designed with **F Class insulation** and with Ingress Protection Rating of **IP41**.
6. All machines are designed with **counter weight ratio of between 45% to 50 %**.
 • (For 1 :1 roping applications with gearless machines, please consult **Torin Drive** sales representative.)
7. All machines are preinstalled with encoders (Heidenhain ERN1387 or equivalent).
8. Standard gearless machines are at 380VAC. Special machines with 220VAC are available for certain models.
9. All Machines come with **Test Certificate** and copy of **operation manual** attached to the machine.



► TDS-IGL15

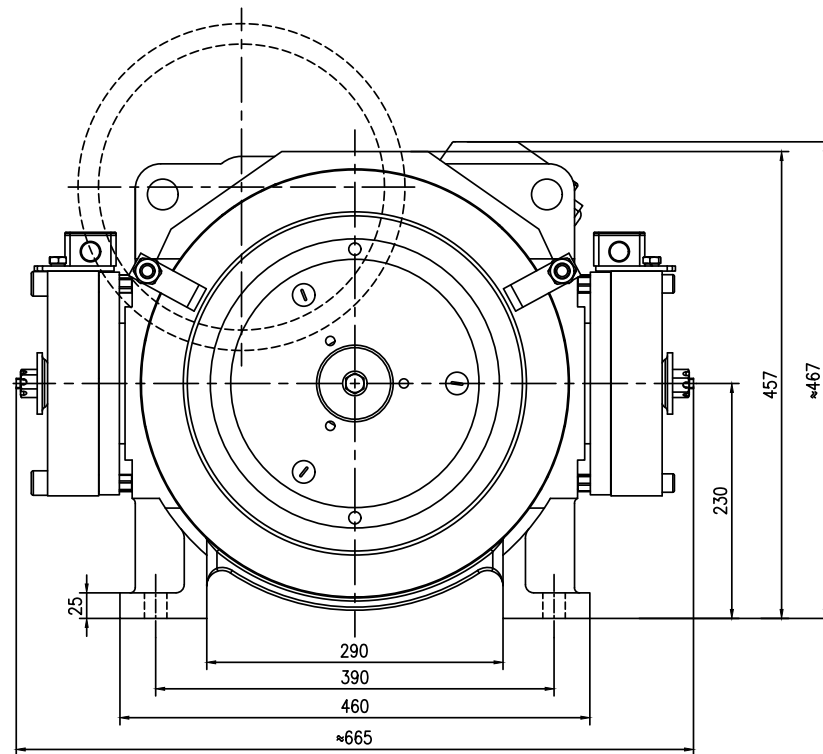
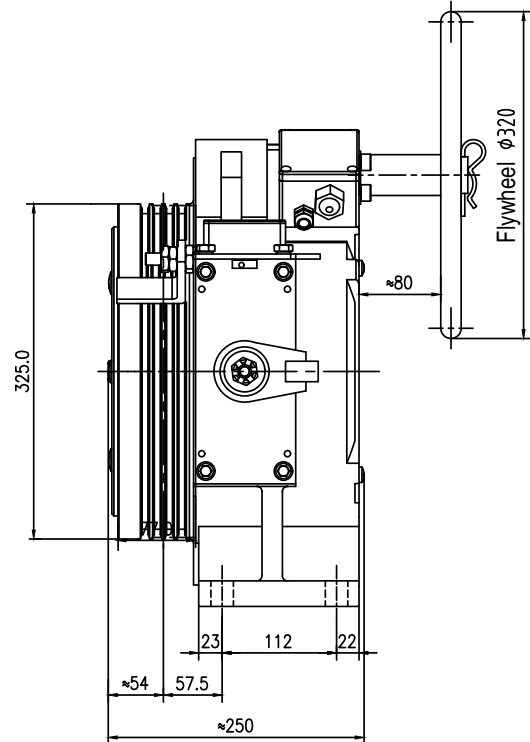
ELEVATOR TRACTION MACHINE

Suspension	2 : 1
Voltage	380V
Pole	32
Rating	S5 (40%)
INS. Class	F
IP Code	IP41
FZD10 Brake	DC110V 2×0.84A (408 Kg) DC110V 2×1.46A (544 Kg)
Max. Static Load	2000 kg
Weight	190 kg

TECHNICAL DATA

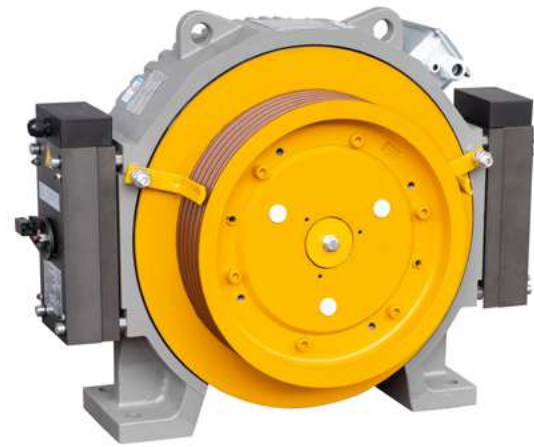
Spec	Load (kg)	Lift Speed (m/s)	Sheave Dia.(mm)	Rope Groove (mm)	Current (A)	Torque (Nm)	Rated Speed (rpm)	Frequency (Hz)	Power (kW)
TDS-IGL15-41P0-8MM	408	1.0	Φ 325	4x□8x12	8.3	265	118	31.5	3.3
TDS-IGL15-51P0-8MM		1.0			8.6	290	118	31.5	3.6
TDS-IGL15-51P5-8MM	544	1.5	Φ 325	5x□8x12	12.4	290	177	47.2	5.4
TDS-IGL15-51P7-8MM		1.7			14.3	290	206	54.9	6.3
TDS-IGL15-61P0-8MM	680	1.0	Φ 325	5x□8x12	9.6	325	118	31.5	4

► DIMENSIONS



REMARK

1. For machine room less, the standard configuration of this machine does not include manual brake release. Customers are required to provide their own electric brake release device.
2. The manual brake release is optional to provide if the customers need it.

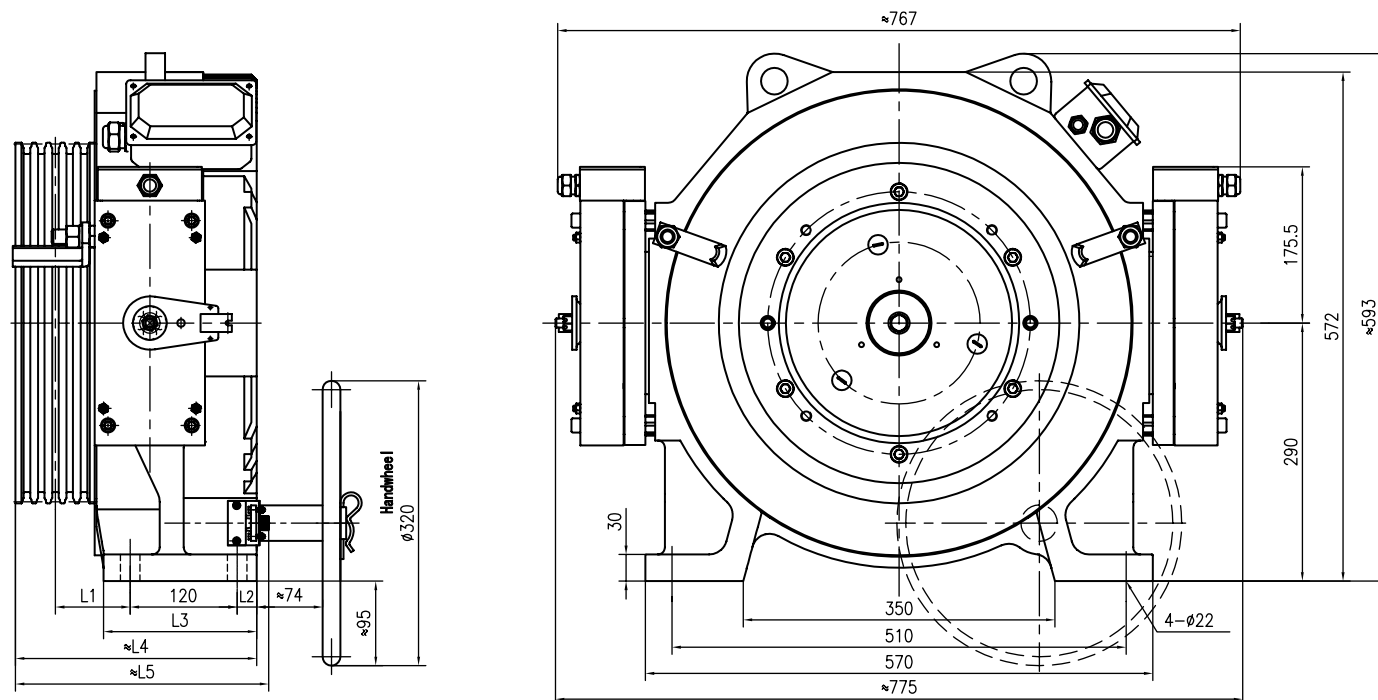


TDS-IGL21N

ELEVATOR TRACTION MACHINE

Suspension	2 : 1
Voltage	380V
Pole	32
Rating	S5 (40%)
INS. Class	F
IP Code	IP41
FZD12AB Brake	DC110V 2x1.28A
Max. Static Load	3000 kg
Weight	315 kg

DIMENSIONS



TECHNICAL DATA

Spec	Load (kg)	Lift Speed (m/s)	Sheave Dia.(mm)	Rope Groove (mm)	Current (A)	Torque (Nm)	Rated Speed (rpm)	Frequency (Hz)	Power (kW)	Length L1	Length L2	Length L3	Length L4	Length L5
TDS-IGL21N-61P0-10MM		1.0			9.7	420	96	25.6	4.2					
TDS-IGL21N-61P5-10MM	680	1.5	Φ 400	4x10x16	14.9	420	144	38.4	6.3	84	22	172	271	285
TDS-IGL21N-61P7-10MM		1.7			15.9	420	167	44.5	7.3					
TDS-IGL21N-62P0-10MM		2.0			18.3	420	192	51.2	8.4					
TDS-IGL21N-81P0-10MM		1.0			12.1	530	96	25.6	5.3					
TDS-IGL21N-81P5-10MM	884	1.5	Φ 400	5x10x16	18.8	530	144	38.4	8	84	22	172	271	285
TDS-IGL21N-81P7-10MM		1.7			20.7	530	167	44.5	9.3					
TDS-IGL21N-82P0-10MM		2.0			23.2	530	192	51.2	10.7					
TDS-IGL21N-101P0-10MM		1.0			14.7	650	96	25.6	6.5					
TDS-IGL21N-101P5-10MM	1088	1.5	Φ 400	5x10x16	22.9	650	144	38.4	9.8	84	22	172	271	285
TDS-IGL21N-101P7-10MM		1.7			25.1	650	167	44.5	11.4					
TDS-IGL21N-102P0-10MM		2.0			28.2	650	192	51.2	13.1					
TDS-IGL21N-111P0-8MM		1.0			17.2	650	112	29.9	7.6					
TDS-IGL21N-111P5-8MM	1156	1.5	Φ 340	8x8x12	26.3	650	168	44.8	11.4	92	44	192	309	323
TDS-IGL21N-111P7-8MM		1.7			29.0	650	198	52.8	13.5					
TDS-IGL21N-112P0-8MM		2.0			33.1	650	225	60	15.3					

REMARK

1. For machine room less, the standard configuration of this machine does not include manual brake release. Customers are required to provide their own electric brake release device.
2. The manual brake release is optional to provide if the customer need it.

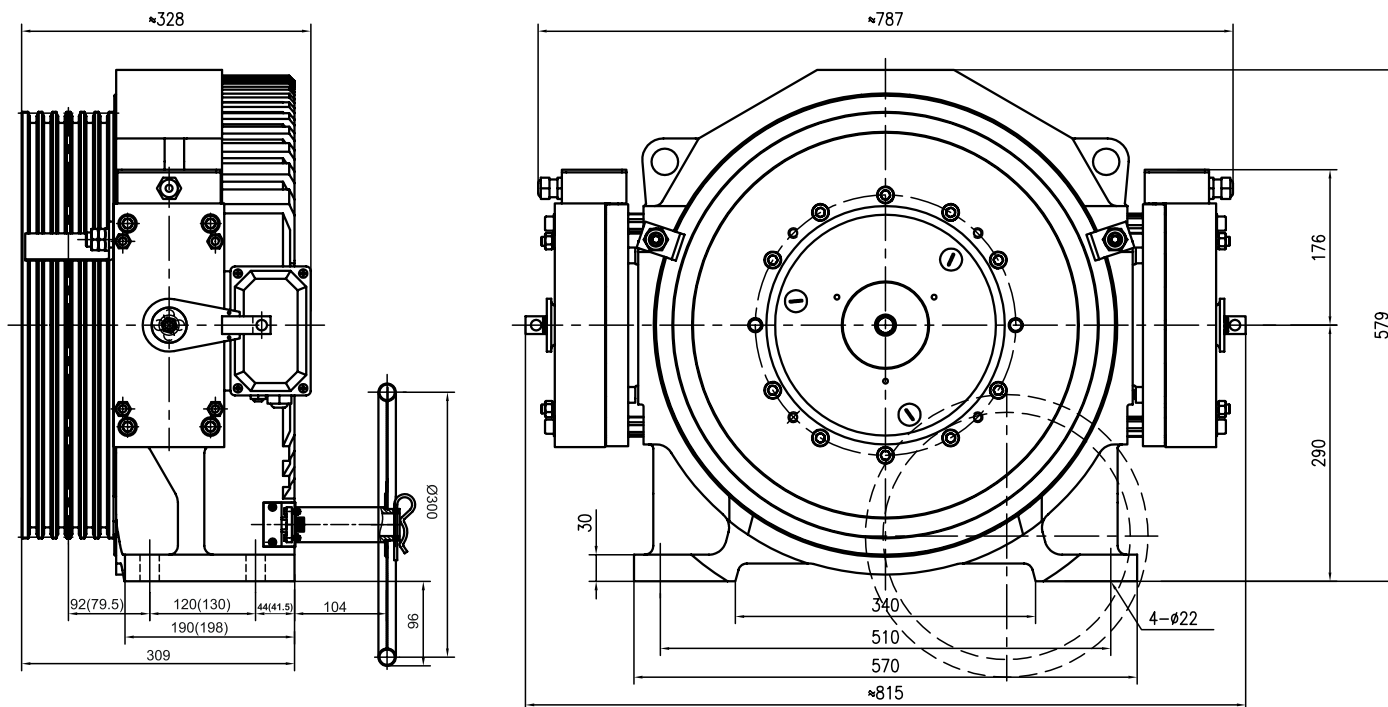
► TDS-IGL21L



ELEVATOR TRACTION MACHINE

Suspension	2 : 1
Voltage	380V
Pole	32
Rating	S5 (40%)
INS. Class	F
IP Code	IP41
FZD12C Brake	DC110V 2x1.5A
Max. Static Load	3500 kg
Weight	350 kg

► DIMENSIONS



TECHNICAL DATA

Spec	Load (kg)	Lift Speed (m/s)	Sheave Dia.(mm)	Rope Groove (mm)	Current (A)	Torque (Nm)	Rated Speed (rpm)	Frequency (Hz)	Power (kW)
TDS-IGL21L-82P0-10MM	884	2.0	Φ 480	5×□10×16	22.3	592	159	42.4	9.9
TDS-IGL21L-82P5-10MM		2.5			28.4		200	53.3	12.4
TDS-IGL21L-102P0-10MM	1088	2.0	Φ 480	6×□10×16	30	780	159	42.4	13
TDS-IGL21L-102P5-10MM		2.5			35.6		200	53.3	16.3
TDS-IGL21L-111P0-10MM	1156	1.0	Φ 400	6×□10×16	17	750	96	25.6	7.5
TDS-IGL21L-111P5-10MM		1.5			26		144	38.4	11.3
TDS-IGL21L-111P7-10MM		1.7			28		167	44.5	13.1
TDS-IGL21L-112P0-10MM	1292	2.0	Φ 400	6×□10×16	33	750	192	51.2	15.1
TDS-IGL21L-121P0-10MM		1.0			18.5		96	25.6	8.1
TDS-IGL21L-121P5-10MM	1292	1.5	Φ 400	6×□10×16	28.3	810	144	38.4	12.2
TDS-IGL21L-121P7-10MM		1.7			30.3		167	44.5	14.2
TDS-IGL21L-122P0-10MM	1360	2.0	Φ 400	6×□10×14	35.6	810	192	51.2	16.3
TDS-IGL21L-131P0-10MM		1.0			20.0		96	25.6	8.6
TDS-IGL21L-131P5-10MM		1.5			30.5		144	38.4	12.9
TDS-IGL21L-131P7-10MM	1.7	33.0	167	44.5	15.0				

REMARK

1. For machine room less, the standard configuration of this machine does not include manual brake release. Customers are required to provide their own electric brake release device.
2. The manual brake release is optional to provide if the customer need it.
3. The dimension in bracket are for 1360Kg Machine.



► TDS-IGL21M

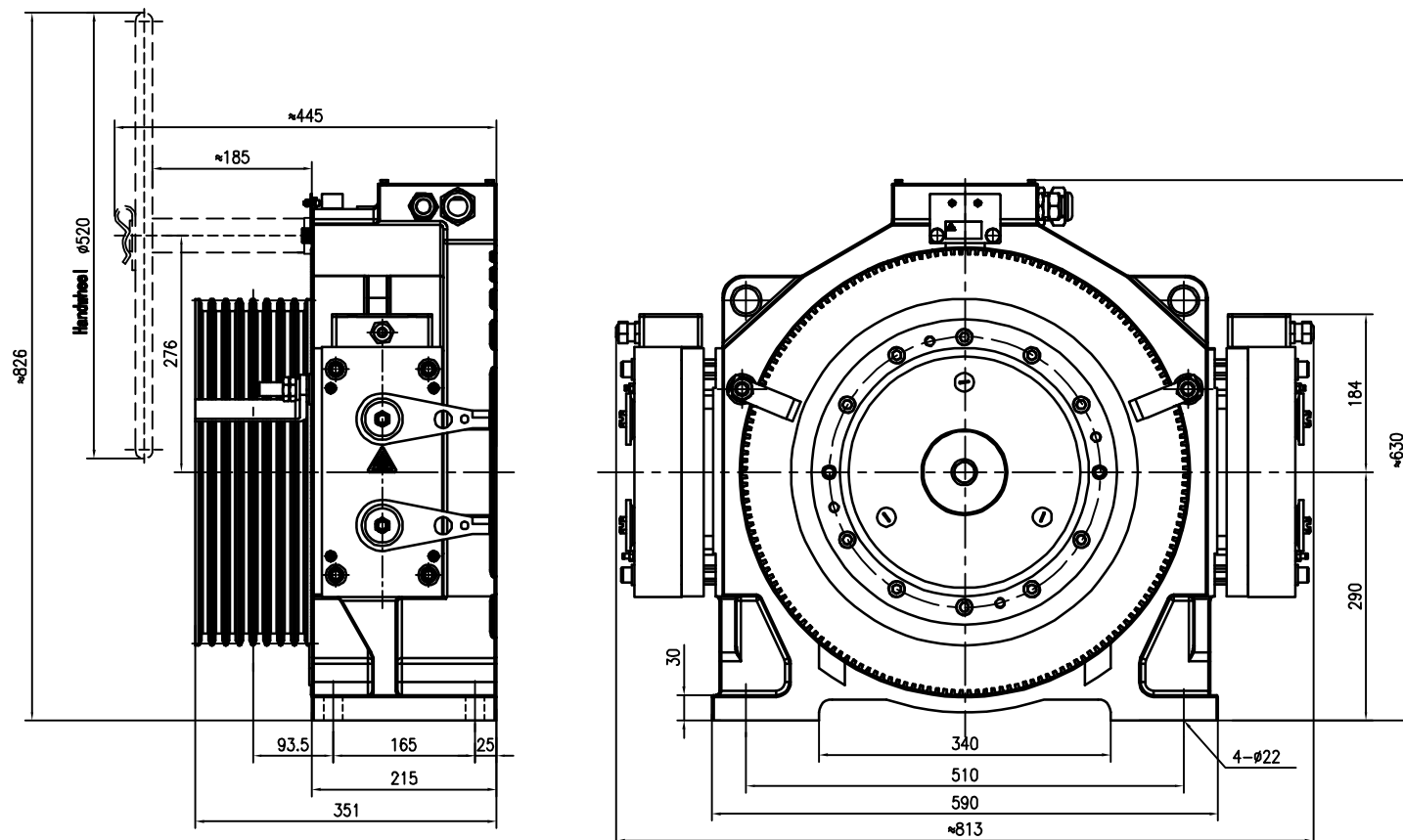
ELEVATOR TRACTION MACHINE

Suspension	2 : 1
Voltage	380V
Pole	32
Rating	S5 (40%)
INS. Class	F
IP Code	IP41
FZD14 Brake	DC110V 2x2A
Max. Static Load	5000 kg
Weight	400 kg

TECHNICAL DATA

Spec	Load (kg)	Lift Speed (m/s)	Sheave Dia.(mm)	Rope Groove (mm)	Current (A)	Torque (Nm)	Rated Speed (rpm)	Frequency (Hz)	Power (kW)
TDS-IGL21M-131P0-10MM		1.0			20	857	96	25.6	8.6
TDS-IGL21M-131P5-10MM	1360	1.5	Φ 400	7×□10×16	29.5	857	144	38.4	12.9
TDS-IGL21M-131P7-10MM		1.7			33.6	857	167	44.8	15
TDS-IGL21M-161P0-10MM		1.0			22.9	1015	96	25.6	10.2
TDS-IGL21M-161P5-10MM	1600	1.5	Φ 400	8×□10×16	35	1015	144	38.4	15.3
TDS-IGL21M-161P7-10MM		1.7			39	1015	167	44.8	17.7

► DIMENSIONS



REMARK

1. For machine room less, the standard configuration of this machine does not include manual brake release. Customers are required to provide their own electric brake release device.
2. The manual brake release is optional to provide if customer need it.

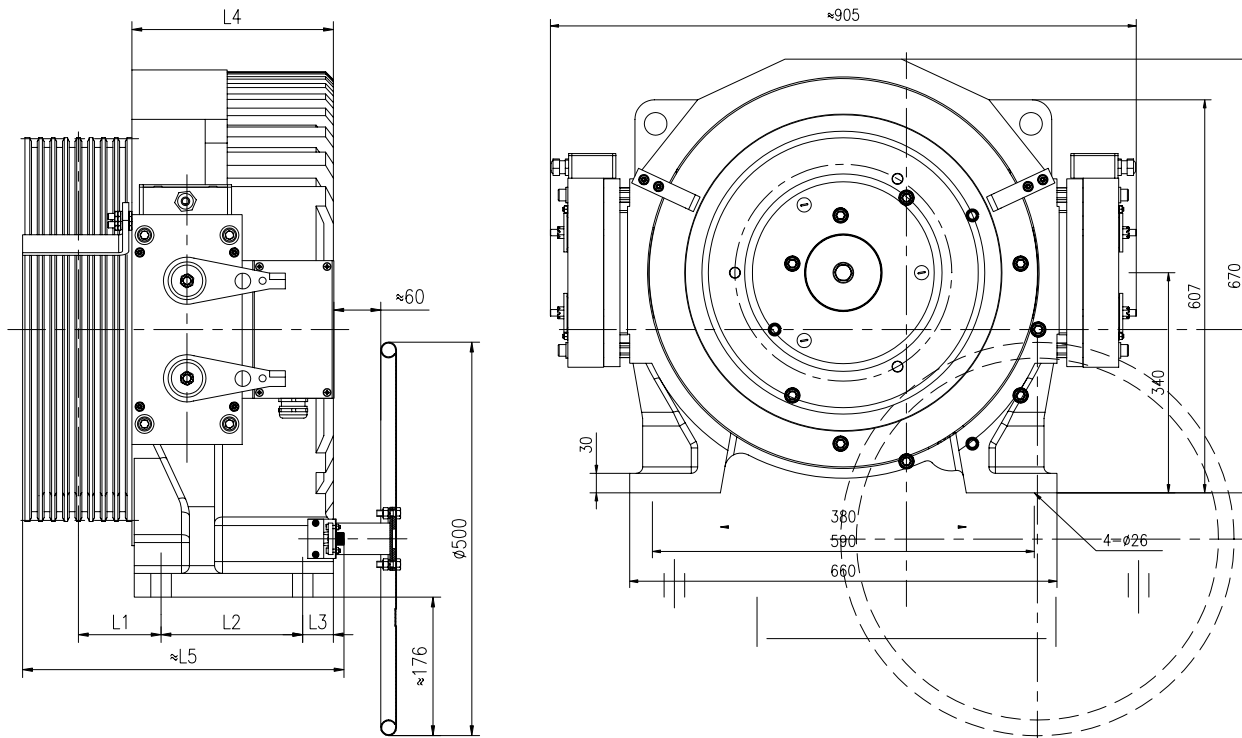
TDS-IGL21XL



ELEVATOR TRACTION MACHINE

Suspension	2 : 1
Voltage	380V
Pole	32
Rating	S5 (40%)
INS. Class	F
IP Code	IP41
FZD14 Brake	DC110V 2x2A
Max. Static Load	6000 kg
Weight	580 kg

DIMENSIONS



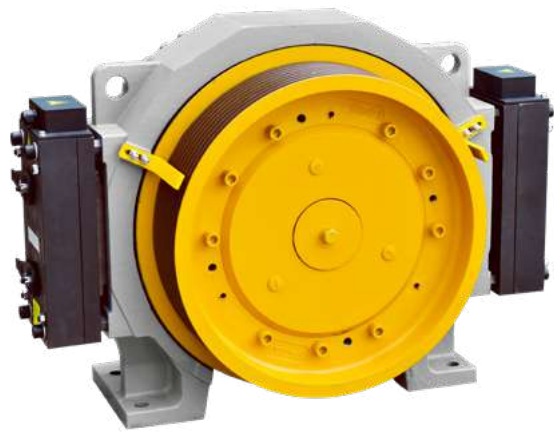
TECHNICAL DATA

Spec	Load (kg)	Lift Speed (m/s)	Sheave Dia.(mm)	Rope Groove (mm)	Current (A)	Torque (Nm)	Rated Speed (rpm)	Frequency (Hz)	Power (kW)	L1	L2	L3	L4	L5
TDS-IGL21XL-131P0AS-10MM		1.0			21.3	910	93	24.8	8.9					
TDS-IGL21XL-131P5AS-10MM	1360	1.5	Φ410	7×Φ10×16	30.8	910	140	37.3	13.3	112	150	35	222	390
TDS-IGL21XL-131P7AS-10MM		1.7			35.0	910	163	43.5	15.5					
TDS-IGL21XL-132P0AS-10MM		2.0			42.4	910	186	49.6	17.7					
TDS-IGL21XL-161P0AS-10MM		1.0			24.4	1070	93	24.8	10.4					
TDS-IGL21XL-161P5AS-10MM	1600	1.5	Φ410	8×Φ10×16	35.6	1070	140	37.3	15.7	112	150	35	222	390
TDS-IGL21XL-161P7AS-10MM		1.7			41.2	1070	163	43.5	18.3					
TDS-IGL21XL-162P0A-10MM		2.0			46.0	1070	186	49.6	20.8					
TDS-IGL21XL-201P0A-10MM		1.0			28.4	1270	93	24.8	12.4					
TDS-IGL21XL-201P5A-10MM	2000	1.5	Φ410	9×Φ10×16	44.1	1270	140	37.3	18.6	112	180	29	246	414
TDS-IGL21XL-201P7A-10MM		1.7			47.3	1270	163	43.5	21.7					
TDS-IGL21XL-202P0A-10MM		2.0			54.4	1270	186	49.6	24.7					
TDS-IGL21XL-131P0-10MM		1.0			19.3	1070	79	21.1	8.9					
TDS-IGL21XL-131P5-10MM		1.5			29.5	1070	118	31.5	13.2					
TDS-IGL21XL-131P7-10MM	1360	1.7	Φ485	7×Φ10×16	32.2	1070	138	36.8	15.5	105	180	29	246	399
TDS-IGL21XL-132P0-10MM		2.0			37	1070	158	42.1	17.7					
TDS-IGL21XL-132P5-10MM		2.5			45.8	1070	197	52.5	22.1					
TDS-IGL21XL-161P0-10MM		1.0			22.8	1270	79	21.1	10.5					
TDS-IGL21XL-161P5-10MM		1.5			35.6	1270	118	31.5	15.7					
TDS-IGL21XL-161P7-10MM	1600	1.7	Φ485	8×Φ10×16	38.7	1270	138	36.8	18.4	105	180	39	256	409
TDS-IGL21XL-162P0-10MM		2.0			44.5	1270	158	42.1	21					
TDS-IGL21XL-162P5-10MM		2.5			55	1270	197	52.5	26.2					

REMARK

1. For machine room less, the standard configuration of this machine does not include manual brake release. Customers are required to provide their own electric brake release device.
2. The manual brake release is optional to provide if customer need it.

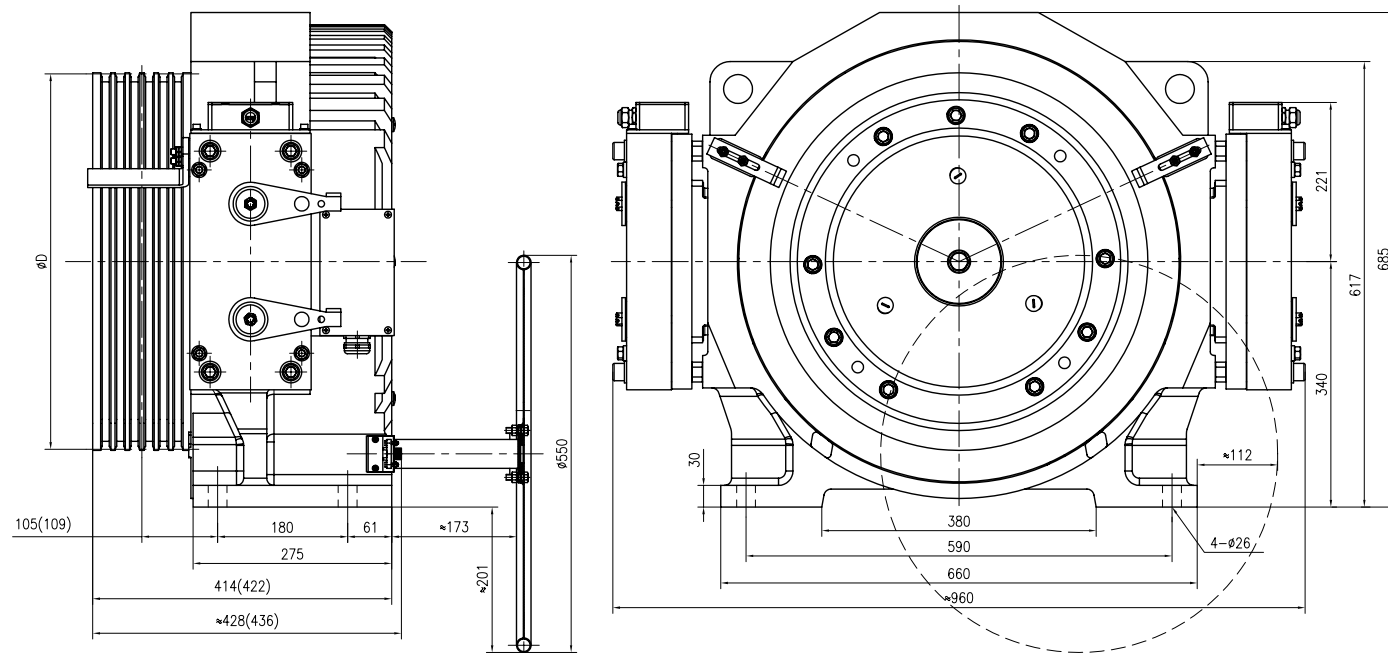
► TDS-IGL21TL



ELEVATOR TRACTION MACHINE

Suspension	2 : 1
Voltage	380V
Pole	32
Rating	S5 (40%)
INS. Class	F
IP Code	IP41
FZD15 Brake	DC110V 2x2.2A
Max. Static Load	6000 kg
Weight	720 kg

► DIMENSIONS



TECHNICAL DATA

Spec	Load (kg)	Lift Speed (m/s)	Sheave Dia.(mm)	Rope Groove (mm)	Current (A)	Torque (Nm)	Rated Speed (rpm)	Frequency (Hz)	Power (kW)
TDS-IGL21TL-123P0-10MM	1292	3.0	Φ550	6×Φ10×16	54.6	1125	208	55.5	24.5
TDS-IGL21TL-133P0-10MM	1360	3.0	Φ550	7×Φ10×16	58.6	1215	208	55.5	26.5
TDS-IGL21TL-163P0-10MM	1600	3.0	Φ550	8×Φ10×16	68	1440	208	55.5	31.4
TDS-IGL21TL-201P0-10MM		1.0			29.1	1520	79	21.1	12.6
TDS-IGL21TL-201P5-10MM		1.5			43.4	1520	118	31.5	18.8
TDS-IGL21TL-201P7-10MM	2000	1.7	Φ485	8×Φ10×16	48.6	1520	138	36.8	22
TDS-IGL21TL-202P0-10MM		2.0			55.5	1520	158	42.1	25.1
TDS-IGL21TL-202P5-10MM		2.5			69.2	1520	197	52.5	31.4
TDS-IGL21TL-251P0-10MM		1.0			34.8	1820	79	21.1	15.1
TDS-IGL21TL-251P5-10MM	2500	1.5	Φ485	9×Φ10×15	52	1820	118	31.5	22.5
TDS-IGL21TL-251P7-10MM		1.7			58.2	1820	138	36.8	26.3
TDS-IGL21TL-252P0-10MM		2.0			66.5	1820	158	42.1	30.1
TDS-IGL21TL-251P0A-13MM	2500	1.0	Φ520	7×Φ13×20	33.4	1910	73	19.5	14.6

REMARK

1. For machine room less, the standard configuration of this machine does not include manual brake release. Customers are required to provide their own electric brake release device.
2. The manual brake release is optional to provide if the customer need it.
3. The dimension in bracket is applied to □485×9×□10×15 or □520×7×□13×20 Groove arrangement.

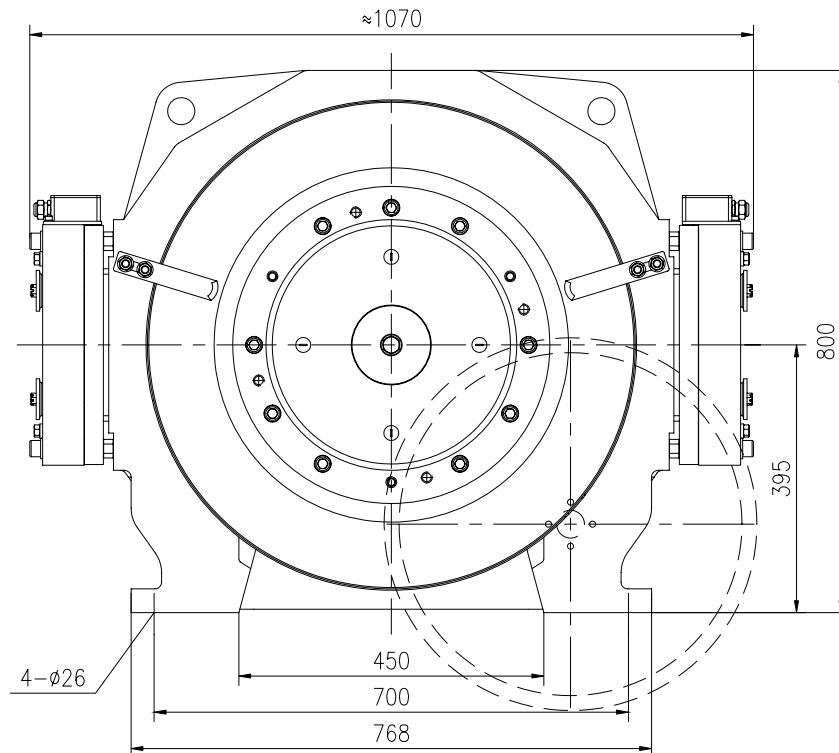
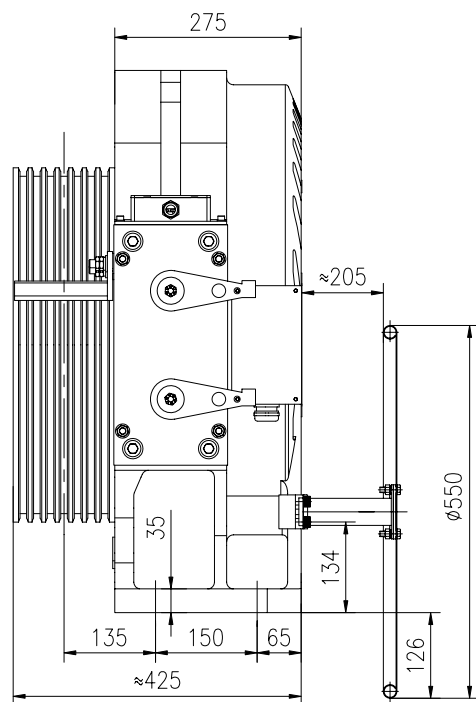
► TDS-IGL36



ELEVATOR TRACTION MACHINE

Suspension	2 : 1
Voltage	380V
Pole	32
Rating	S5 (40%)
INS. Class	F
IP Code	IP41
FZD15 Brake	DC110V 2x2.2A
Max. Static Load	8000 kg
Weight	910 kg

► DIMENSIONS



TECHNICAL DATA

Spec	Load (kg)	Lift Speed (m/s)	Sheave Dia.(mm)	Rope Groove (mm)	Current (A)	Torque (Nm)	Rated Speed (rpm)	Frequency (Hz)	Power (kW)
TDS-IGL36-201P0-13MM		1.0			29.2	1735	73	19.5	13.3
TDS-IGL36-201P7-13MM	2000	1.7	Φ520	6xΦ13x20	48.7	1735	128	34.1	23.3
TDS-IGL36-202P0-13MM		2.0			54.6	1735	147	39.2	26.7
TDS-IGL36-202P5-13MM		2.5			74.6	1735	184	49.1	33.4
TDS-IGL36-251P0-13MM		1.0			35.7	2170	73	19.5	16.6
TDS-IGL36-251P7-13MM	2500	1.7	Φ520	7xΦ13x20	59.8	2170	128	34.1	29.1
TDS-IGL36-252P0-13MM		2.0			68.3	2170	147	39.2	33.4
TDS-IGL36-252P5-13MM		2.5			91.4	2066	184	49.1	39.8
TDS-IGL36-301P0-12MM		1.0			44.5	2260	79	21.1	18.7
TDS-IGL36-301P7-12MM		1.5			62.5	2260	118	31.5	27.9
TDS-IGL36-301P7-12MM	3000	1.7	Φ485	8xΦ12x18	72.5	2260	138	36.8	32.7
TDS-IGL36-252P0-12MM		2.0			83.0	2260	158	42.1	39.8

REMARK

1. For machine room less, the standard configuration of this machine does not include manual brake release. Customers are required to provide their own electric brake release device.
2. The manual brake release is optional to provide if the customer need it.

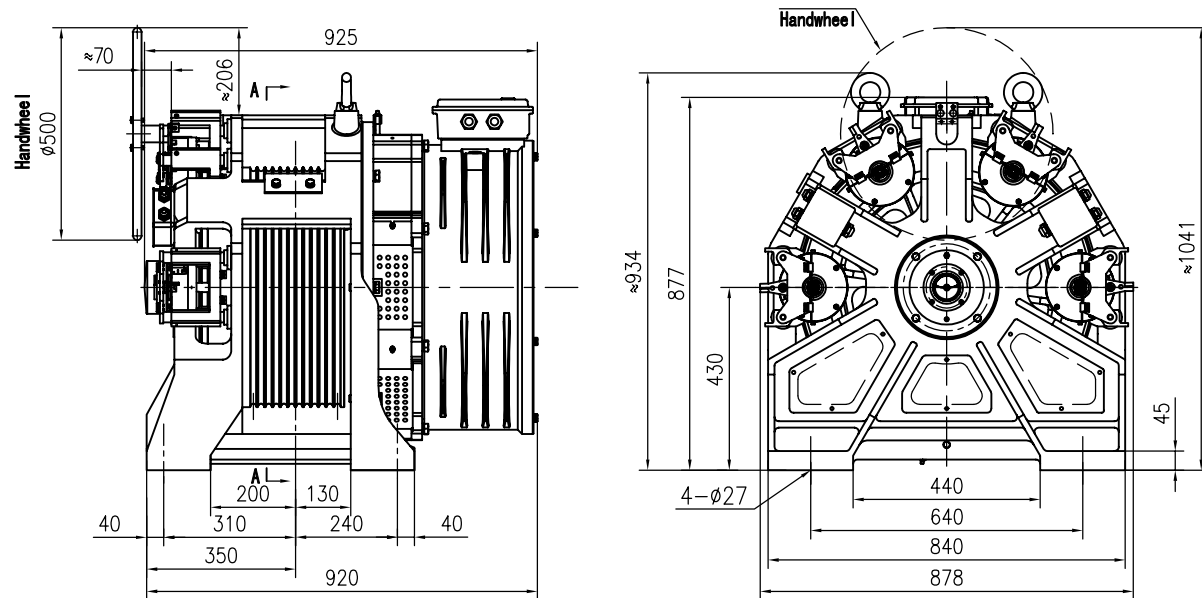


TDS-IGL54

ELEVATOR TRACTION MACHINE

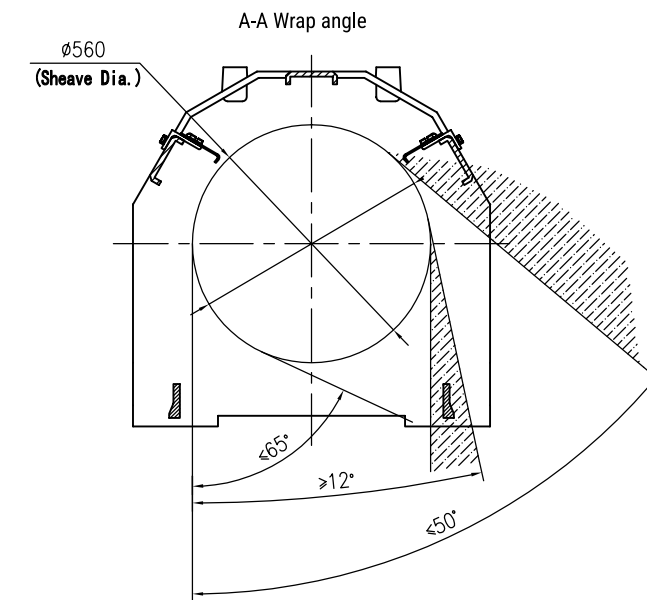
Suspension	2 : 1
Voltage	380V
Pole	20
Rating	S5 (50%)
INS. Class	F
IP Code	IP21
PZD140B Brake	DC110V 2x0.89A
PZD140 Brake	DC110V 4x0.69A
Max. Static Load	14000 kg
Weight	1120 kg

DIMENSIONS



TECHNICAL DATA

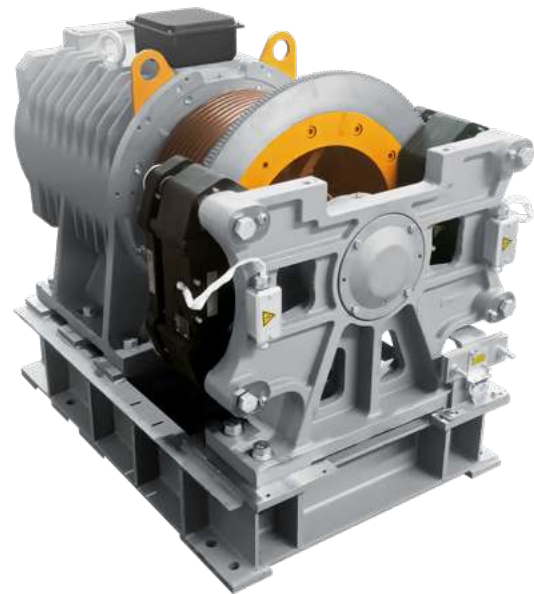
Spec	Load (kg)	Lift Speed (m/s)	Sheave Dia.(mm)	Rope Groove (mm)	Double Roping	Current (A)	Torque (Nm)	Rated Speed (rpm)	Frequency (Hz)	Power (kW)
TDS-IGL54-103P0-13MM	1088	3.0	$\phi 560$	10x $\phi 13$ x18	YES	42.8	955	205	34.2	20.5
TDS-IGL54-104P0-13MM		4.0				56.5	955	273	45.5	27.3
TDS-IGL54-123P0-13MM	1292	3.0	$\phi 560$	10x $\phi 13$ x18	YES	53.3	1190	205	34.2	25.5
TDS-IGL54-124P0-13MM		4.0				72	1190	273	45.5	34
TDS-IGL54-133P0-13MM	1360	3.0	$\phi 560$	10x $\phi 13$ x18	YES	57.2	1290	205	34.2	27.7
TDS-IGL54-134P0-13MM		4.0				75.5	1290	273	45.5	36.9
TDS-IGL54-163P0-13MM	1600	3.0	$\phi 560$	12x $\phi 13$ x18	YES	69.5	1525	205	34.2	32.7
TDS-IGL54-164P0-13MM		4.0				93	1525	273	45.5	43.6
TDS-IGL54-203P0-13MM	2000	3.0	$\phi 560$	12x $\phi 13$ x18	YES	90	1910	205	34.2	41
TDS-IGL54-204P0-13MM		4.0				120	1910	273	45.5	54.3



Note: the angle of the wire rope is around the range shown above, avoiding the shadow part.

REMARK

1. PZD140B for 1000-1350kg; PZD140 for 1600-2000kg.



TDS-IGL55

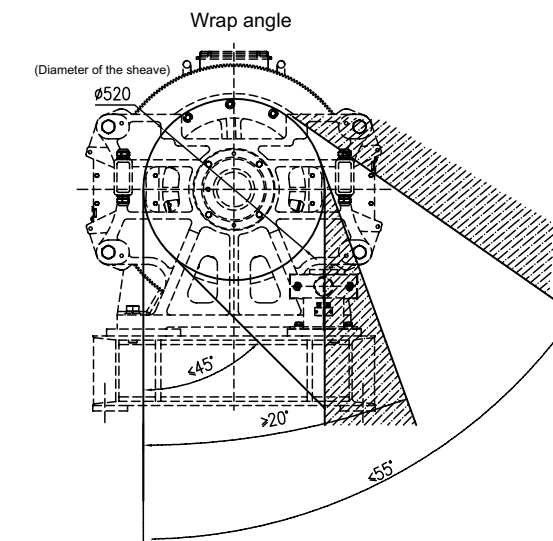
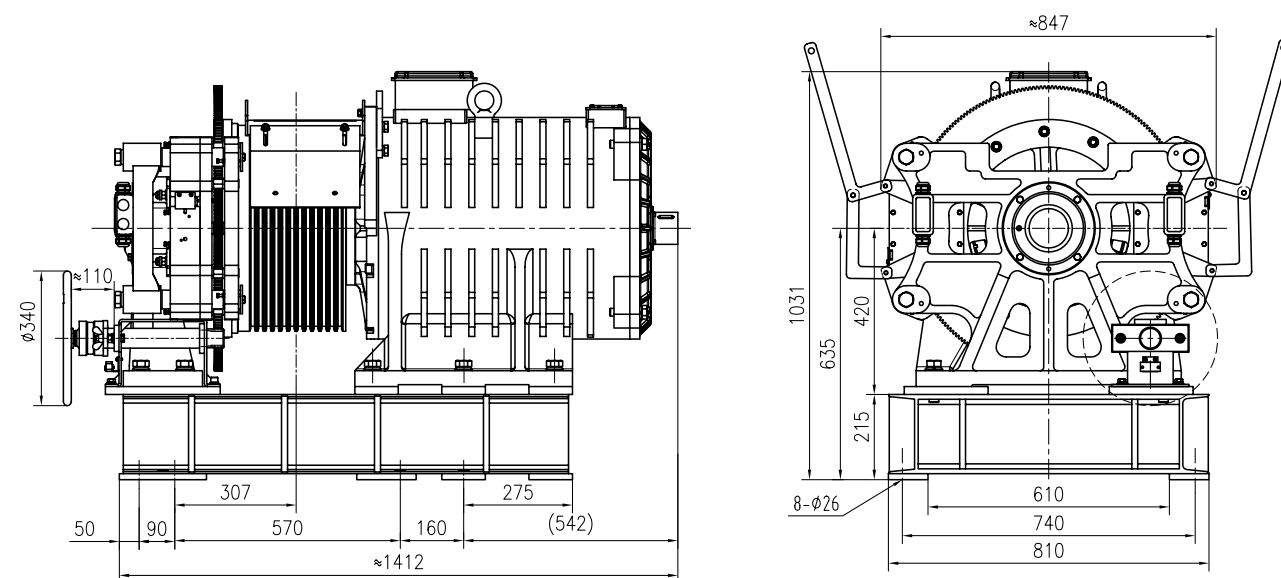
ELEVATOR TRACTION MACHINE

Suspension	2 : 1
Voltage	380V
Pole	32
Rating	S5 (40%)
INS. Class	F
IP Code	IP41
PZD360 Brake	DC110V 2x2.2A
Max. Static Load	14000 kg
Weight	1900 kg

TECHNICAL DATA

Spec	Load (kg)	Lift Speed (m/s)	Sheave Dia.(mm)	Rope Groove (mm)	Current (A)	Torque (Nm)	Rated Speed (rpm)	Frequency (Hz)	Power (kW)
TDS-IGL55-301P0-13MM		1.0			46	2475	73	19.5	18.3
TDS-IGL55-301P5-13MM		1.5			65	2475	110	29.3	28.5
TDS-IGL55-301P7-13MM	3000	1.7	Φ520	8×Φ13×20	77	2475	128	34.1	33.2
TDS-IGL55-302P0-13MM		2.0			87	2475	147	39.2	38.1
TDS-IGL55-302P5-13MM		2.5			111	2475	184	49.1	47.7
TDS-IGL55-401P0-13MM		1.0			61	3330	73	19.5	24.5
TDS-IGL55-401P5-13MM		1.5			91	3330	110	29.3	36.9
TDS-IGL55-401P7-13MM	4000	1.7	Φ520	10×Φ13×20	104	3330	128	34.1	42.9
TDS-IGL55-402P0-13MM		2.0			122	3330	147	39.2	49.3
TDS-IGL55-402P5-13MM		2.5			157	3300	184	49.1	63.3
TDS-IGL55-501P0V-13MM		1.0			72	4000	73	19.5	30.6
TDS-IGL55-501P5V-13MM	5000	1.5	Φ520	12×Φ13×20	105	4000	110	29.3	46.1
TDS-IGL55-501P7V-13MM		1.7			124	4000	128	34.1	53.6
TDS-IGL55-502P0V-13MM		2.0			142	4000	147	39.2	61.6

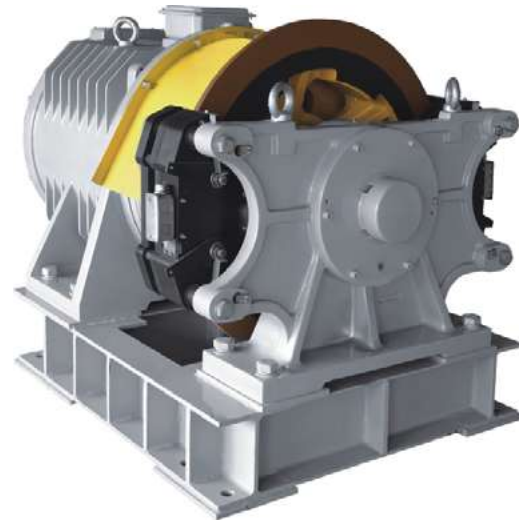
DIMENSIONS



Note: the angle of the wire rope is around the range shown above, avoiding the shadow part.

REMARK

1. The machine can't be configured with the remote manual brake release.
2. The recommended undercut angle for the groove of this machine is 105 °, and it's optional according to practical condition.



TDS-IGL60

ELEVATOR TRACTION MACHINE

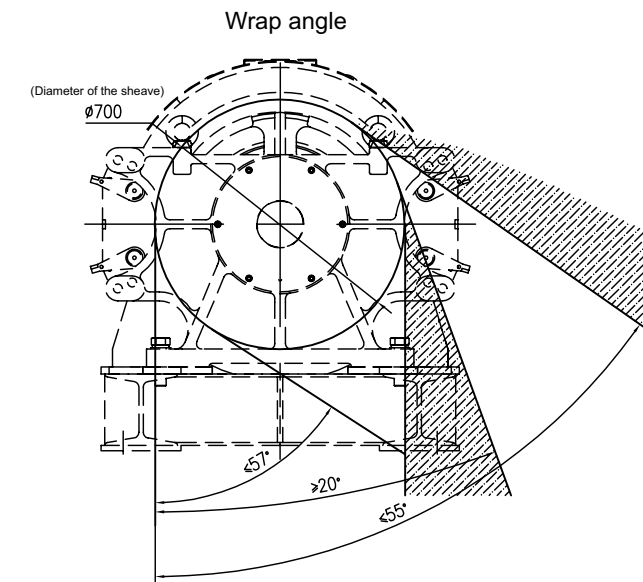
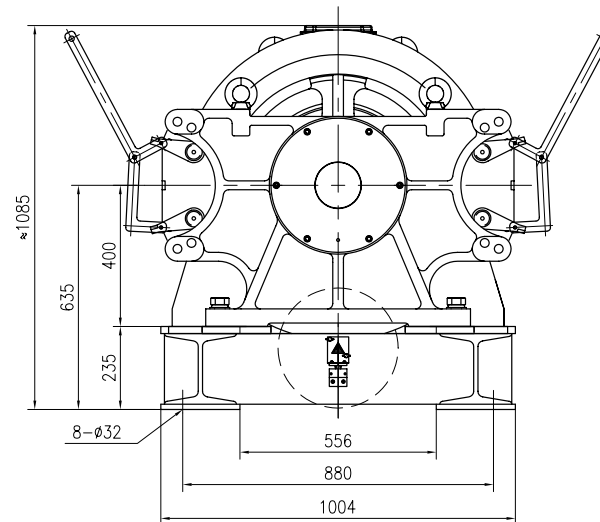
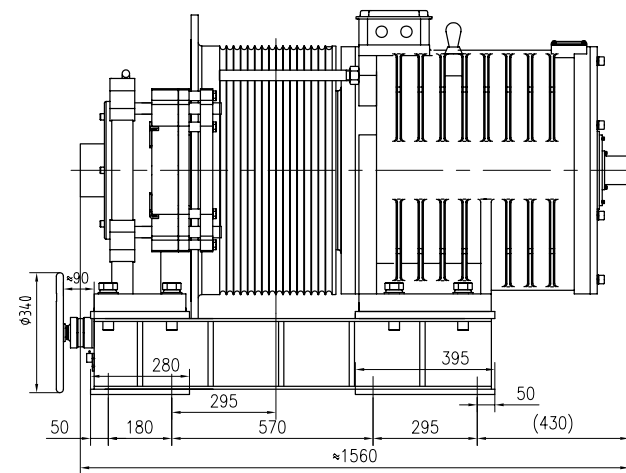
Suspension	1 : 1
Voltage	380V
Pole	24
Rating	S5 (60%)
INS. Class	F
IP Code	IP41
PZD360 Brake	DC110V 2x2.2A
Max. Static Load	36000 kg
Weight	3000 kg



TECHNICAL DATA

Spec	Load (kg)	Lift Speed (m/s)	Sheave Dia.(mm)	Rope Groove (mm)	Double Roping	Current (A)	Torque (Nm)	Rated Speed (rpm)	Frequency (Hz)	Power (kW)
TDS-IGL60-165P0-16MM-1		5.0				123	3750	137	27.4	53.9
TDS-IGL60-166P0-16MM-1		6.0				141	3750	164	32.8	64.6
TDS-IGL60-167P0-16MM-1	1600	7.0	Φ700	14×Φ16×20	YES	165	3750	192	38.4	75.4
TDS-IGL60-168P0-16MM-1		8.0				195	3750	218	43.6	85.6
TDS-IGL60-205P0-16MM-1		5.0				147	4700	137	27.4	67.2
TDS-IGL60-206P0-16MM-1	2000	6.0	Φ700	16×Φ16×20	YES	174	4700	164	32.8	80.6
TDS-IGL60-207P0-16MM-1		7.0				213	4700	192	38.4	94
TDS-IGL60-208P0-16MM-1		8.0				238	4700	218	43.6	107

DIMENSIONS



Note: the angle of the wire rope is around the range shown above, avoiding the shadow part.

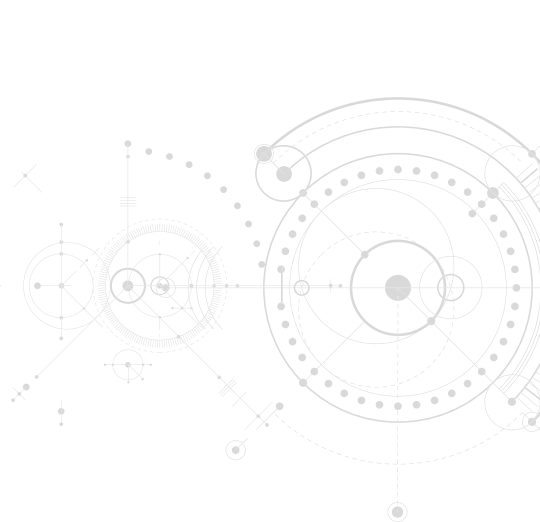
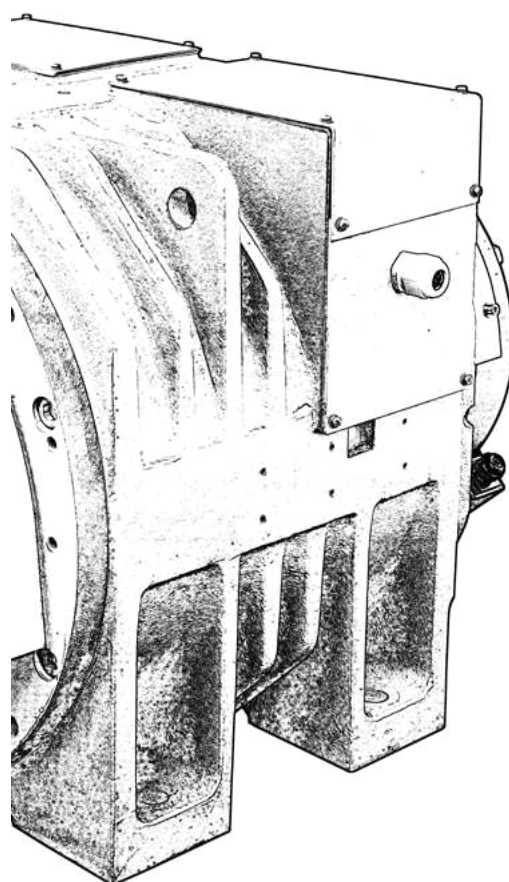
REMARK

1. The machine can't be configured with the remote brake release.

CATALOG

TDS-RGL SERIES

PERMANENT MAGNET SYNCHRONOUS
GEARLESS TRACTION MACHINE



TORINDRIVE

CUSTOMER-CENTRIC INNOVATION

RECOMMENDATION (TDS-RGL SERIES)

Capacity	1.0	1.5	1.7	2.0	2.5	3.0
408	TDS-RGL00	TDS-RGL00				
544		TDS-RGL15				
680	TDS-RGL15		TDS-RGL21N			
884	TDS-RGL21N					TDS-RGL35
1088	TDS-RGL21N					
1156	TDS-RGL25N			TDS-RGL35		
1292	TDS-RGL25N					
1360	TDS-RGL35					TDS-RGL35
1600	TDS-RGL35					TDS-RGL40
2000	TDS-RGL40					
2500	TDS-RGL40					

GEARLESS MACHINE STANDARD

1. Torin Drive gearless machine Part Number illustration

Example:

TDS-RGL00- 4 **1P0-** 8mm
 Model# Capacity Speed Rope Dia
 (408 Kg) (1 M/S)

- All gearless machines are **CE compliant and certified**.
- All motors are designed for **180 starts per hour at 40 % duty cycle and 2:1 roping**.
- All motors are designed with **F Class insulation** and with Ingress Protection Rating of **IP41**.
- All machines are designed with **counter weight ratio of between 45% to 50 %**.
 • (For 1 :1 roping applications with gearless machines, please consult Torin Drive sales representative.)
- All machines are preinstalled with encoders (Heidenhain ERN1387 or equivalent).
- TDS-RGL & TDS-HGL** series machine do not come with **Handwheel** option.
- Standard gearless machines are at 380VAC. Special machines with 220VAC are available for certain models.
 • Exception: For Home Lift **TDS-HGL** models Both **380VAC & 220VAC** are standard.
- All Machines come with **Test Certificate** and copy of **operation manual** attached to the machine.

► TDS-RGL00



ELEVATOR TRACTION MACHINE

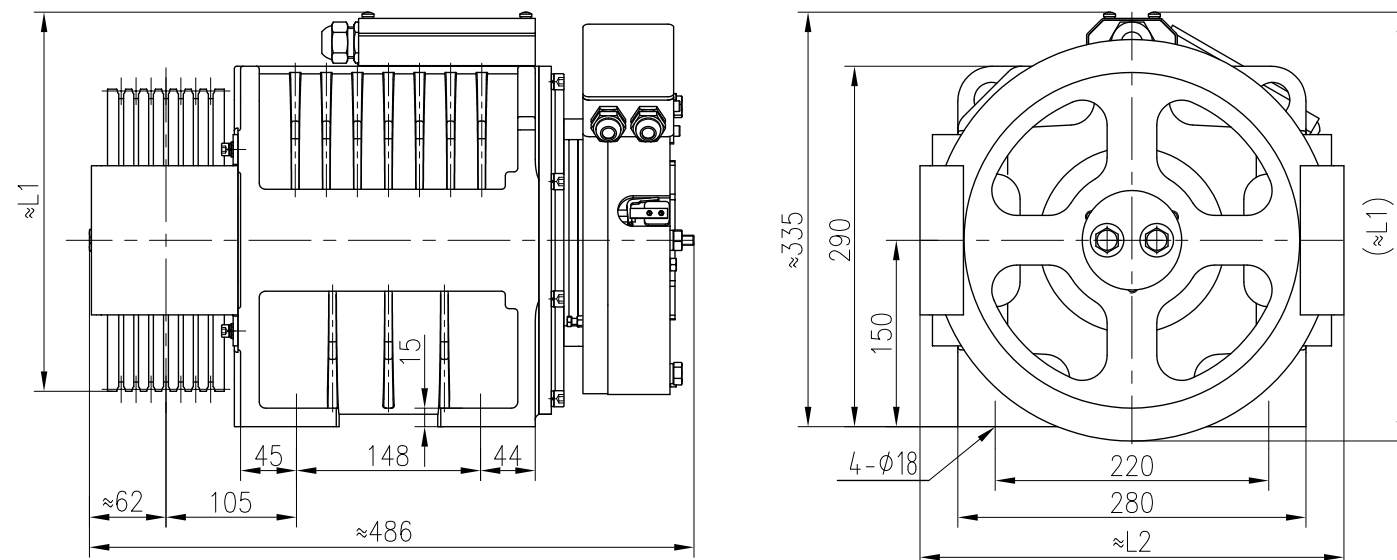
Suspension	2 : 1
Voltage	380V
Pole	20
Rating	S5 (40%)
INS. Class	F
IP Code	IP41
PZ300C Brake	DC110V 1.9A
Max. Static Load	1800 kg
Weight	140 kg



TECHNICAL DATA

Spec	Load (kg)	Lift Speed (m/s)	Sheave Dia.(mm)	Rope Groove (mm)	Current (A)	Torque (Nm)	Rated Speed (rpm)	Frequency (Hz)	Power (kW)	L1	L2
TDS-RGL00-41P0B-6MM		1.0			6.8	160	159	26.5	3.0		
TDS-RGL00-41P5B-6MM	408	1.5	Φ240	5×Φ6.5×12	11	175	239	39.8	4.5	305	260
TDS-RGL00-41P7B-6MM		1.7			11.8	175	279	46.5	5.1		
TDS-RGL00-41P0C-8MM		1.0			8.3	240	120	20	2.7		
TDS-RGL00-41P5C-8MM	408	1.5	Φ320	4×Φ8×12	10.8	240	179	29.8	4.5	345	345
TDS-RGL00-41P7C-8MM		1.7			12.5	240	209	34.8	5.3		
TDS-RGL00-51P0C-8MM	544	1.0	Φ320	4×Φ8×12	9.5	275	120	20	3.5	345	345

► DIMENSIONS



REMARK

1. The standard configuration of this machine does not include manual brake release. Customers are required to provide their own electric brake release device.
2. The manual brake release is optional to provide if the customer need it.
3. LV Stands For 220V Motor

► TDS-RGL00N



ELEVATOR TRACTION MACHINE

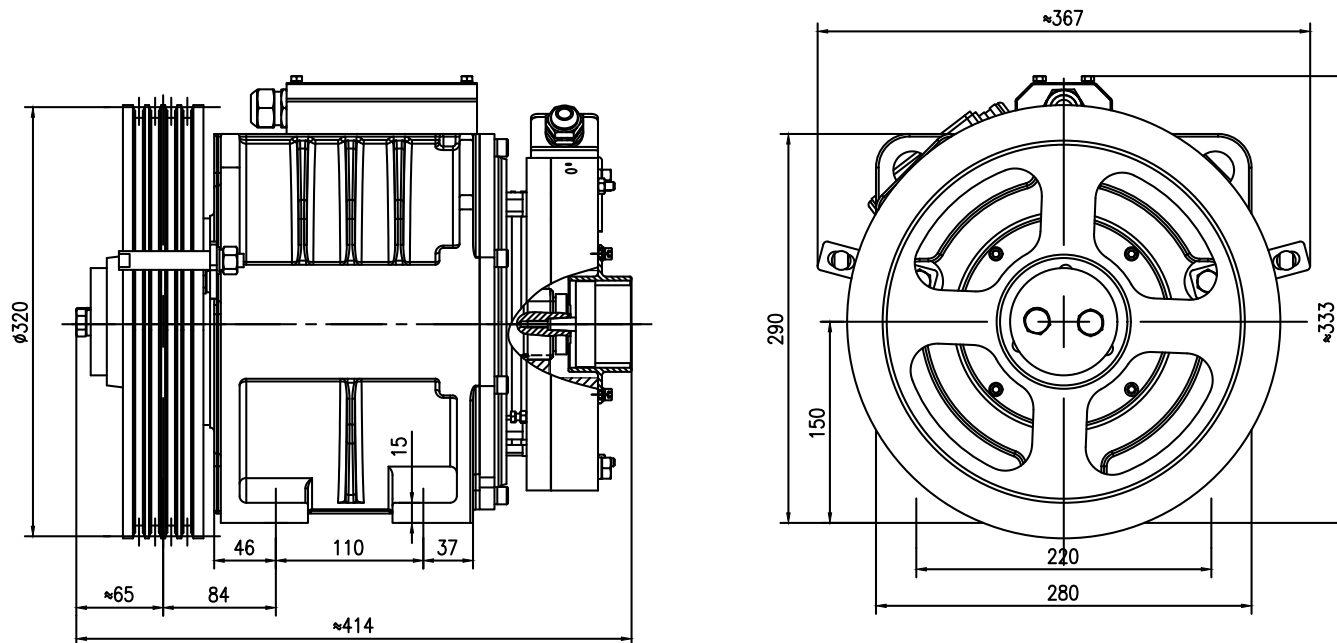
Suspension	2 : 1
Voltage	380V
Pole	20
Rating	S5 (25%)
INS. Class	F
IP Code	IP41
PZ300B Brake	DC110V 1.6A
Max. Static Load	1800 kg
Weight	95 kg



TECHNICAL DATA

Spec	Load (kg)	Lift Speed (m/s)	Sheave Dia.(mm)	Rope Groove (mm)	Current (A)	Torque (Nm)	Rated Speed (rpm)	Frequency (Hz)	Power (kW)
TDS-RGL00N-41P0C-8MM	408	1.0	φ320	4×φ8×12	8.5	210	120	20	2.6

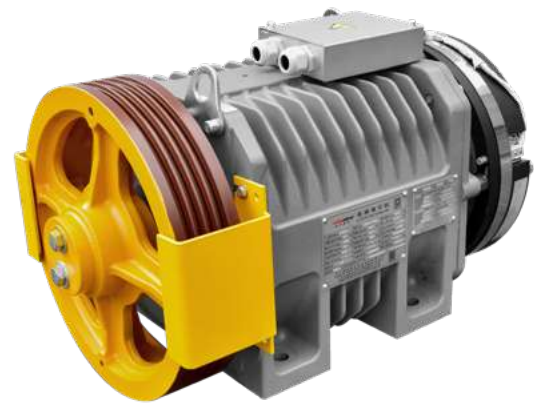
► DIMENSIONS



REMARK

1. The standard configuration of this machine does not include manual brake release. Customers are required to provide their own electric brake release device.
2. The manual brake release is optional to provide if the customer need it.

► TDS-RGL15



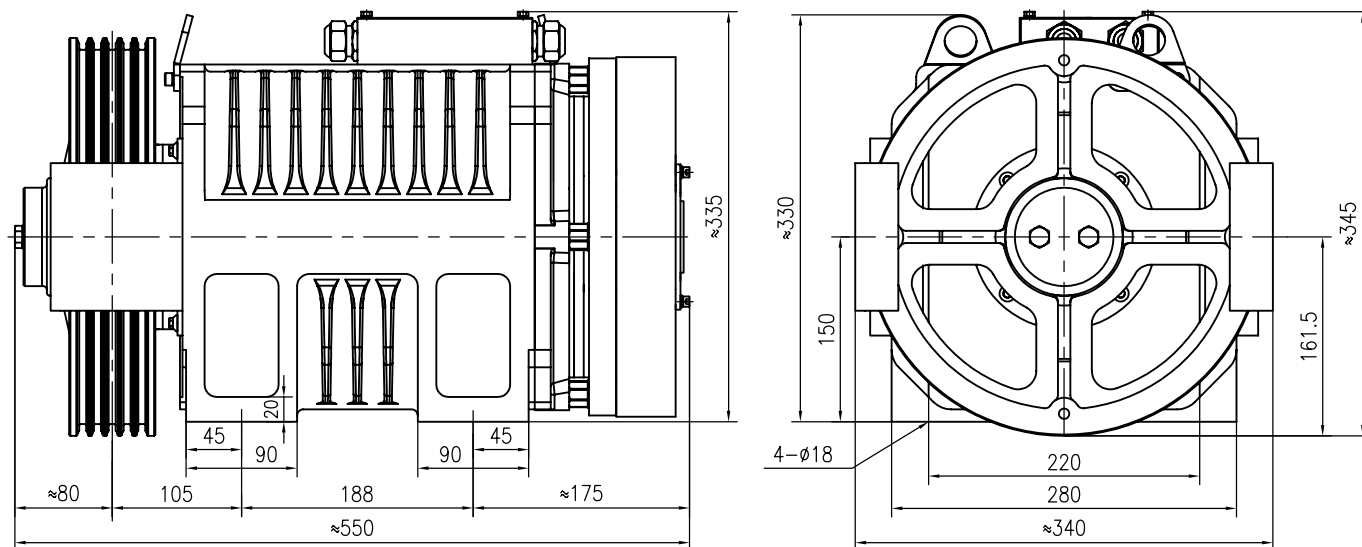
ELEVATOR TRACTION MACHINE

Suspension	2 : 1
Voltage	380V
Pole	20
Rating	S5 (40%)
INS. Class	F
IP Code	IP41
PZ1000B Brake	DC110V 2x1.41A
Max. Static Load	2000 kg
Weight	175 kg

TECHNICAL DATA

Spec	Load (kg)	Lift Speed (m/s)	Sheave Dia.(mm)	Rope Groove (mm)	Current (A)	Torque (Nm)	Rated Speed (rpm)	Frequency (Hz)	Power (kW)
TDS-RGL15-51P0-8MM		1.0			9.5	275	120	20	3.5
TDS-RGL15-51P5-8MM	544	1.5	Φ 320	5x□8x12	12.9	290	179	29.8	5.4
TDS-RGL15-51P7-8MM		1.7			14.6	290	209	34.8	6.3
TDS-RGL15-61P0-8MM		1.0			11.0	318	120	20	4
TDS-RGL15-61P5-8MM	680	1.5	Φ 320	5x□8x12	14.9	336	179	29.8	6.3
TDS-RGL15-61P7A-8MM		1.7			18.0	336	209	34.8	7.4

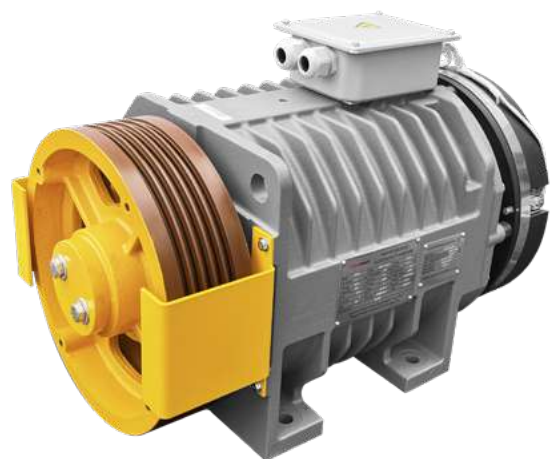
► DIMENSIONS



REMARK

1. The standard configuration of this machine does not include manual brake release. Customers are required to provide their own electric brake release device.
2. The manual brake release is optional to provide if the customer need it.

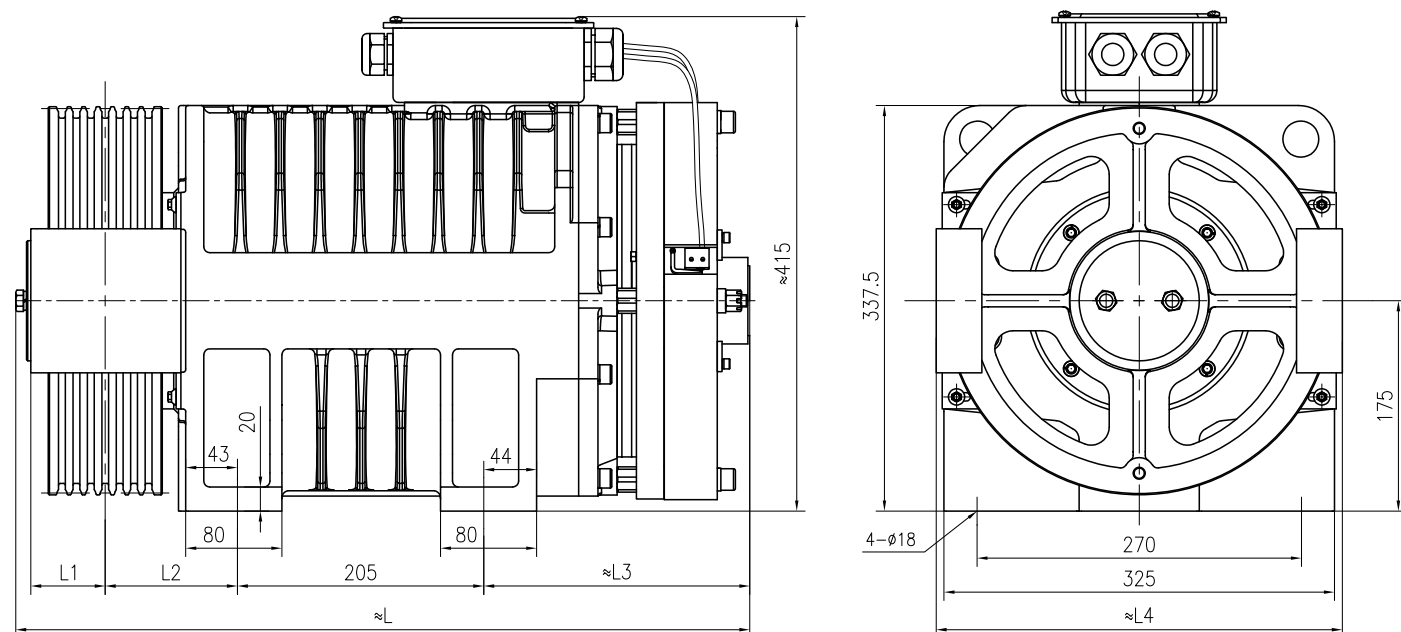
► TDS-RGL21N



ELEVATOR TRACTION MACHINE

Suspension	2 : 1
Voltage	380V
Pole	20
Rating	S5 (40%)
INS. Class	F
IP Code	IP41
PZ1400B Brake	DC110V 2×0.9A (2×1.17A)
Max. Static Load	3500 kg
Weight	245 kg

► DIMENSIONS



TECHNICAL DATA

Spec	Load (kg)	Lift Speed (m/s)	Sheave Dia.(mm)	Rope Groove (mm)	Current (A)	Torque (Nm)	Rated Speed (rpm)	Frequency (Hz)	Power (kW)	L1	L2	L3	L4	L5
TDS-RGL21N-81P0B-6MM		1.0			13.5	310	159	26.5	5.2					
TDS-RGL21N-81P5B-6MM	884	1.5	Φ240	8×Φ6.5×12	20	310	239	39.8	7.8	75	133	223	330	640
TDS-RGL21N-81P7B-6MM		1.7			21.5	310	279	46.5	9.1					
TDS-RGL21N-81P0-8MM		1.0			14	401	120	20	5					
TDS-RGL21N-81P5-8MM	884	1.5	Φ320	6×Φ8×12	20.2	420	179	29.8	7.9	62	110	223	350	615
TDS-RGL21N-81P7-8MM		1.7			21.7	420	209	34.8	9.2					
TDS-RGL21N-82P0-8MM		2.0			23.5	420	239	39.8	10.5					
TDS-RGL21N-101P0B-6MM		1.0			16.6	380	159	26.5	6.3					
TDS-RGL21N-101P5B-6MM	1088	1.5	Φ240	9/10×Φ6.5×12	24.5	380	239	39.8	9.5	75	133	223	330	640
TDS-RGL21N-101P7B-6MM		1.7			26.3	380	279	46.5	11.1					
TDS-RGL21N-101P0-8MM		1.0			17.6	506	120	20	6.4					
TDS-RGL21N-101P5-8MM	1088	1.5	Φ320	7×Φ8×12	26	525	179	29.8	9.8	62	110	223	350	615
TDS-RGL21N-101P7-8MM		1.7			27.5	525	209	34.8	11.5					
TDS-RGL21N-102P0-8MM		2.0			29.4	525	239	39.8	13.1					
TDS-RGL21N-111P0-8MM		1.0			18.2	615	120	20	7.7					
TDS-RGL21N-111P5-8MM	1156	1.5	Φ320	7×Φ8×12	30	615	179	29.8	11.5	62	110	265	350	657
TDS-RGL21N-111P7-8MM		1.7			30	615	209	34.8	13.5					
TDS-RGL21N-112P0-8MM		2.0			33.6	615	239	39.8	15.4					

REMARK

1. The maximum static load is 3000kg when the load is ≤1020kg.
2. When this machine is used for loading ≤1020kg, the current of brakes is 2×0.9A;when this machine is used for loading > 1020kg, the current of brakes is 2×1.17A.
3. The standard configuration of this machine does not include manual brake release. Customers are required to provide their own electric brake release device.
4. The manual brake release is optional to provide if the customer need it.

► TDS-RGL25N



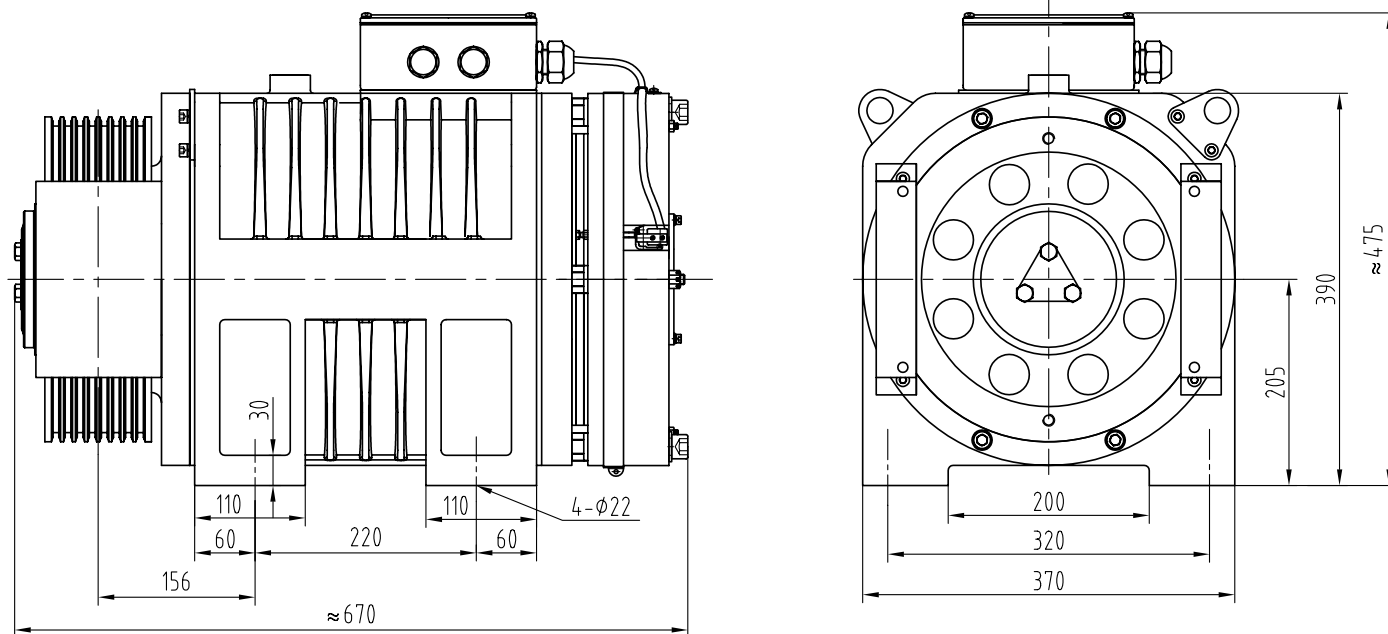
ELEVATOR TRACTION MACHINE

Suspension	2 : 1
Voltage	380V
Pole	20
Rating	S5 (40%)
INS. Class	F
IP Code	IP41
PZ1600B Brake	DC110V 2x1.8A
Max. Static Load	3800 kg
Weight	360 kg

TECHNICAL DATA

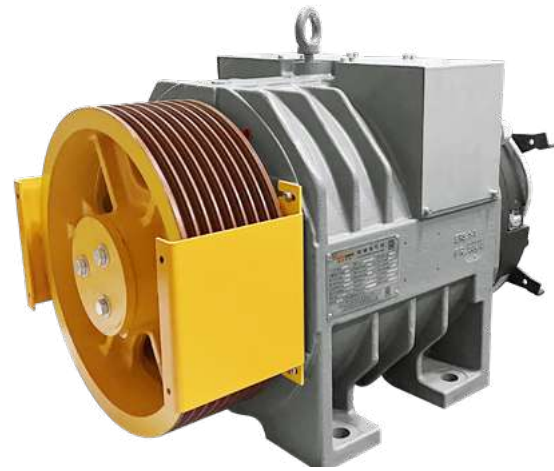
Spec	Load (kg)	Lift Speed (m/s)	Sheave Dia. (mm)	Rope Groove (mm)	Current (A)	Torque (Nm)	Rated Speed (rpm)	Frequency (Hz)	Power (kW)
TDS-RGL25N-121P0-8MM		1.0			19.8	680	119	19.9	8.5
TDS-RGL25N-121P5-8MM	1292	1.5	Φ320	8×Φ8×12	30.3	680	179	29.8	12.7
TDS-RGL25N-121P7-8MM		1.7			32.8	680	209	34.8	14.9
TDS-RGL25N-122P0-8MM		2.0			38.9	680	239	39.8	17

► DIMENSIONS



REMARK

1. The standard configuration of this machine does not include manual brake release. Customers are required to provide their own electric brake release device.
2. The manual brake release is optional to provide if the customer need it.

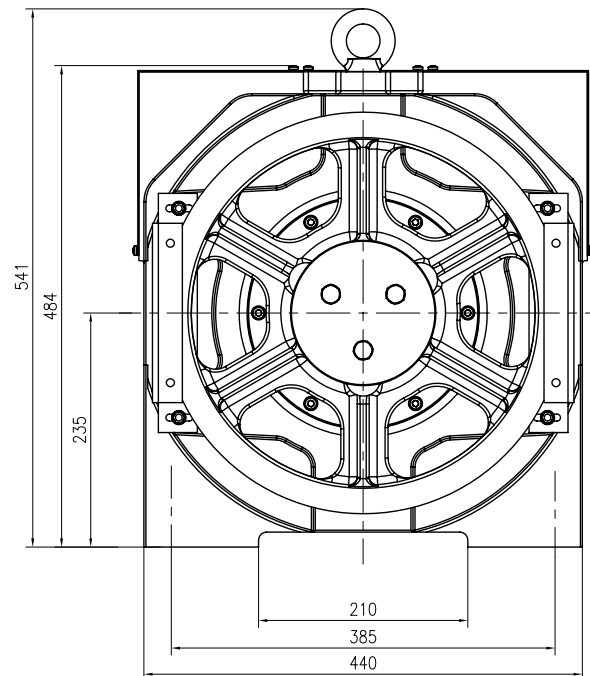
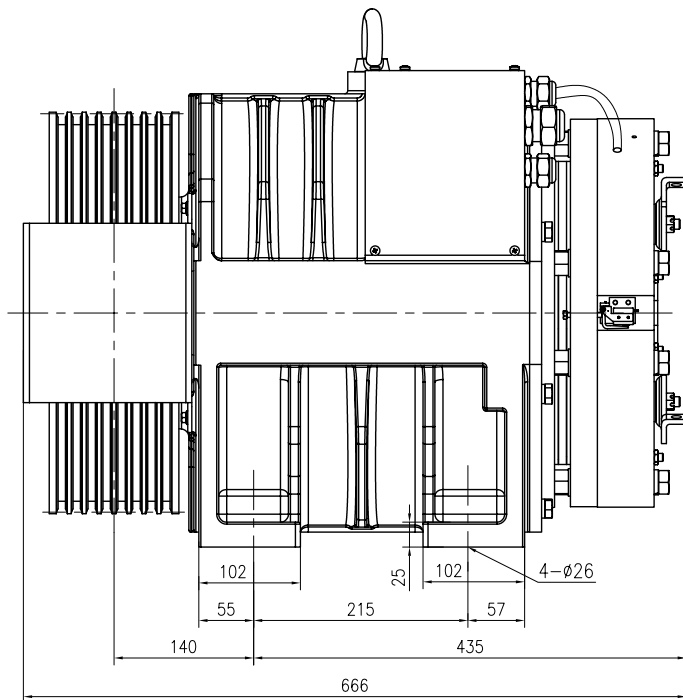


TDS-RGL35N

ELEVATOR TRACTION MACHINE

Suspension	2 : 1
Voltage	380V
Pole	32
Rating	S5 (40%)
INS. Class	F
IP Code	IP41
PZ2500B Brake	DC110V 2x2.1A
Max. Static Load	5500 kg
Weight	450 kg

DIMENSIONS



TECHNICAL DATA

Spec	Load (kg)	Lift Speed (m/s)	Sheave Dia.(mm)	Rope Groove (mm)	Current (A)	Torque (Nm)	Rated Speed (rpm)	Frequency (Hz)	Power (kW)
TDS-RGL35N-112P5-10MM	1156	2.5	Φ400	6×Φ10×16	43	730	239	63.7	18.3
TDS-RGL35N-113P0-10MM		3.0	Φ450		52.5	820	255	68	21.9
TDS-RGL35N-122P5-10MM	1292	2.5	Φ400	7×Φ10×16	50.7	795	239	63.7	19.9
TDS-RGL35N-123P0-10MM		3.0	Φ450		57.5	890	255	68	23.8
TDS-RGL35N-131P0-10MM	1360	1.0	Φ400	7×Φ10×16	23	855	96	25.6	8.6
TDS-RGL35N-131P5-10MM		1.5			32	855	143	38.1	12.8
TDS-RGL35N-131P7-10MM	1.7	36.5	855	167	44.5	15			
TDS-RGL35N-132P0-10MM	1600	2.0	Φ400	8×Φ10×16	41.6	855	191	50.9	17.1
TDS-RGL35N-132P5-10MM		2.5			54.5	855	239	63.7	21.4
TDS-RGL35N-133P0-10MM	3.0	62.3	965	255	68	25.8			
TDS-RGL35N-161P0-10MM	1600	1.0	Φ400	8×Φ10×16	27	1015	96	25.6	10.2
TDS-RGL35N-161P5-10MM		1.5			37	1015	143	38.1	15.2
TDS-RGL35N-161P7-10MM	1.7	43	1015	167	44.5	17.7			
TDS-RGL35N-162P0-10MM	1600	2.0	Φ400	8×Φ10×16	50.4	1015	191	50.9	20.3
TDS-RGL35N-162P5-10MM		2.5			64	1015	239	63.7	25.4

REMARK

1. The standard configuration of this machine does not include manual brake release. Customers are required to provide their own electric brake release device.
2. The manual brake release is optional to provide if the customer need it.

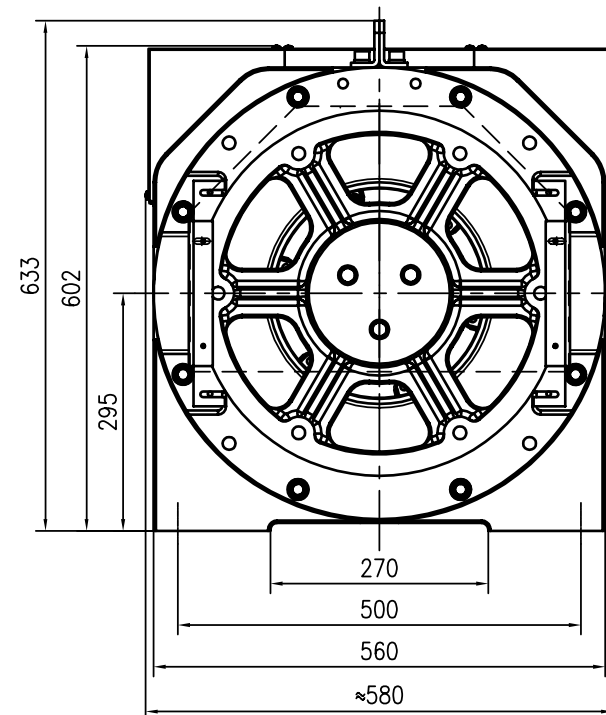
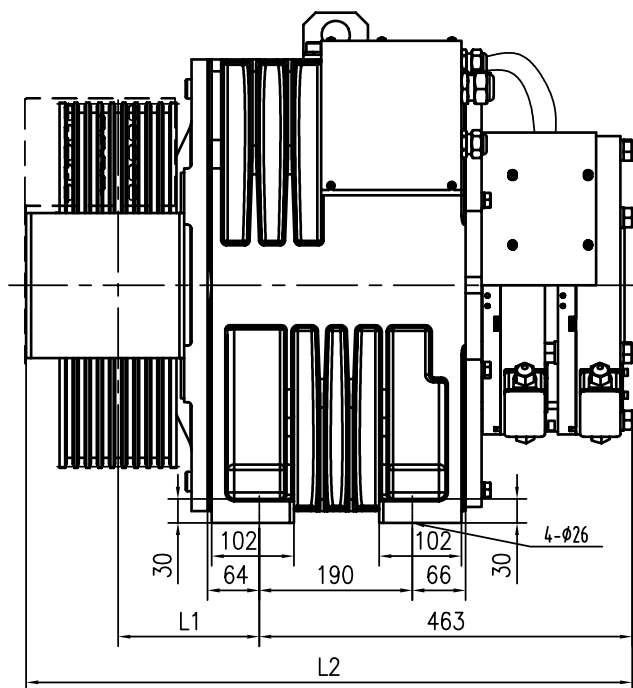
► TDS-RGL40



ELEVATOR TRACTION MACHINE

Suspension	2 : 1
Voltage	380V
Ploe	32
Rating	S5 (40%)
INS.Class	F
IP Code	IP41
SPZ1600 Brake	DC110V 2×2.1A
Max.Static Load	6000 kg
Weight	650 kg

► MACHINE'S DIMENSION



TECHNICAL DATA

Spec	Load (kg)	Lift Speed (m/s)	Sheave Diam(mm)	Rope Sheave (mm)	Current (A)	Torque (Nm)	Rated Speed (rpm)	Frequency (Hz)	Power (kW)	Length L1	Length L
TDS-RGL40-163P0A-10MM	1600	3.0	Φ450	8×Φ10×15	70.6	1145	255	68	30.6	175	752
TDS-RGL40-201P0-10MM		1.0			31.5	1270	96	25.6	12.8		
TDS-RGL40-201P5-10MM		1.5			45.5	1270	144	38.4	19.1		
TDS-RGL40-201P7-10MM	2000	1.7	Φ400	9×Φ10×15	51	1270	167	44.5	22.2	205	795
TDS-RGL40-202P0-10MM		2.0			58	1270	191	50.9	25.4		
TDS-RGL40-202P5-10MM		2.5			72.5	1270	239	63.7	31.8		
TDS-RGL40-251P0-10MM		1.0			37.5	1530	96	25.6	15.4		
TDS-RGL40-251P5-10MM		1.5			56	1530	144	38.4	23.1		
TDS-RGL40-251P7-10MM	2500	1.7	Φ400	10×Φ10×16	62	1530	167	44.5	26.8	205	795
TDS-RGL40-252P0-10MM		2.0			70	1530	191	50.9	30.6		
TDS-RGL40-252P5-10MM		2.5			87.5	1530	239	63.7	38.3		
TDS-RGL40-203P0-10MM	2000	3.0	Φ450	9×Φ10×15	88.5	1440	225	68	38.5	175	752

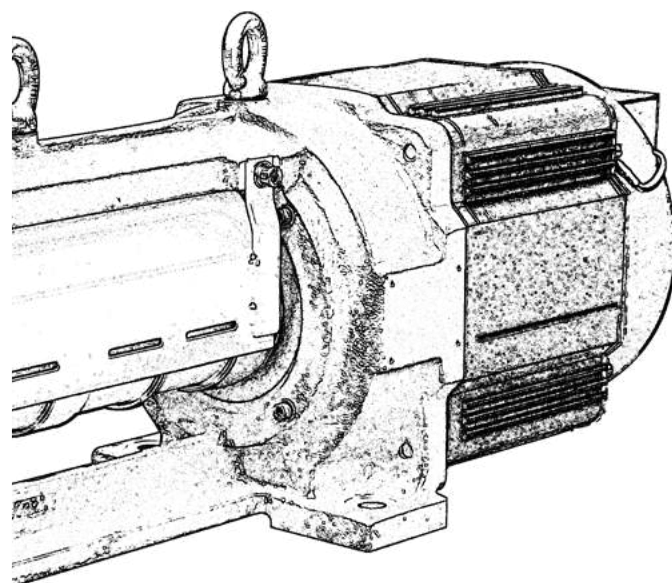
REMARK

1. This machine does not include manual brake release. Customers are required to provide their own electric brake release device.

CATALOG

IBM SERIES

STEEL BELT ELEVATOR TRACTION MACHINE



TORINDRIVE

CUSTOMER-CENTRIC INNOVATION

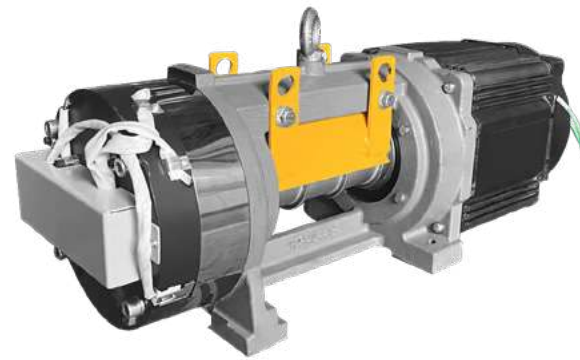
Download Our App

We're excited to announce our new mobile app

Download



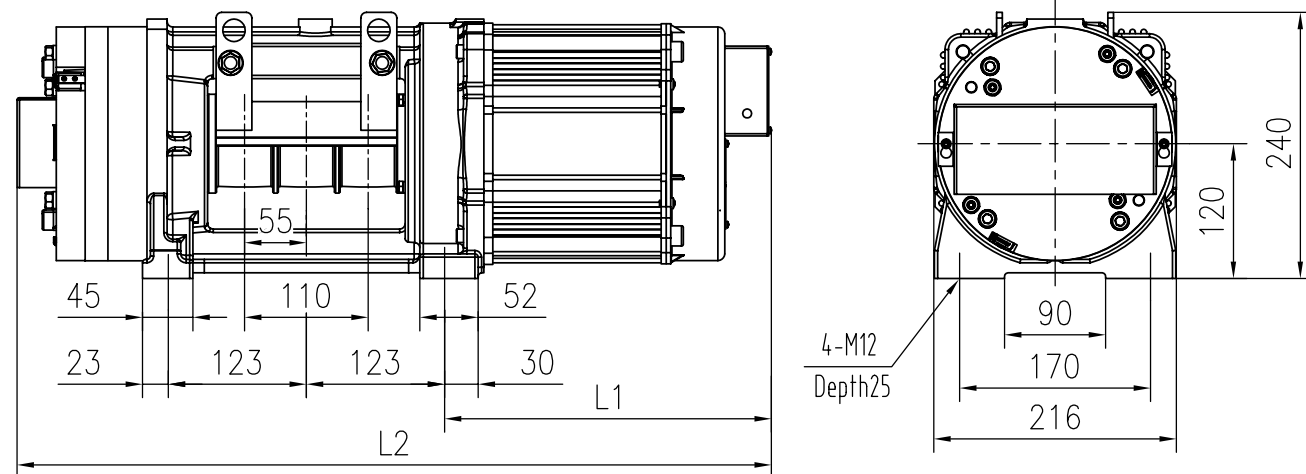
► TDS-IBM00



BELT ELEVATOR TRACTION MACHINE

Suspension	2 : 1
Voltage	380V
Pole	12
Rating	S5 (40%)
INS. Class	F
IP Code	IP41
PZ300C Brake	DC110V 1.9A
Max. Static Load	1950 kg
Weight	82 kg

► DIMENSIONS



TECHNICAL DATA

Spec	Load (kg)	Lift Speed (m/s)	Sheave Dia.(mm)	Belt: quantity × width(mm)	Current (A)	Torque (Nm)	Rated Speed (rpm)	Frequency (Hz)	Power (kW)	L1	L2
TDS-IBM00-61P0		1.0			10	83	477	47.7	4.2		
TDS-IBM00-61P5	450/680	1.5	Φ77	3x30	16	83	763	76.3	6.7	235	615
TDS-IBM00-61P7		1.7			16	83	835	83.5	7.3		
TDS-IBM00-81P0		1.0			11.2	101	477	47.7	5		
TDS-IBM00-81P5	884	1.5	Φ77	3x30	19.7	101	763	76.3	8.1	295	675
TDS-IBM00-81P7		1.7			19.7	101	835	83.5	8.8		
TDS-IBM00-101P0		1.0			14	126	477	47.7	6.3		
TDS-IBM00-101P5	1020	1.5	Φ77	3x30	24.6	126	763	76.3	10.1	295	675
TDS-IBM00-101P7		1.7			24.6	126	835	83.5	11.9		

REMARK

1. For machine room less, the standard configuration of this machine does not include manual brake release. Customers are required to provide their own electric brake release device.
2. The manual brake release is optional to provide if the customer need it.

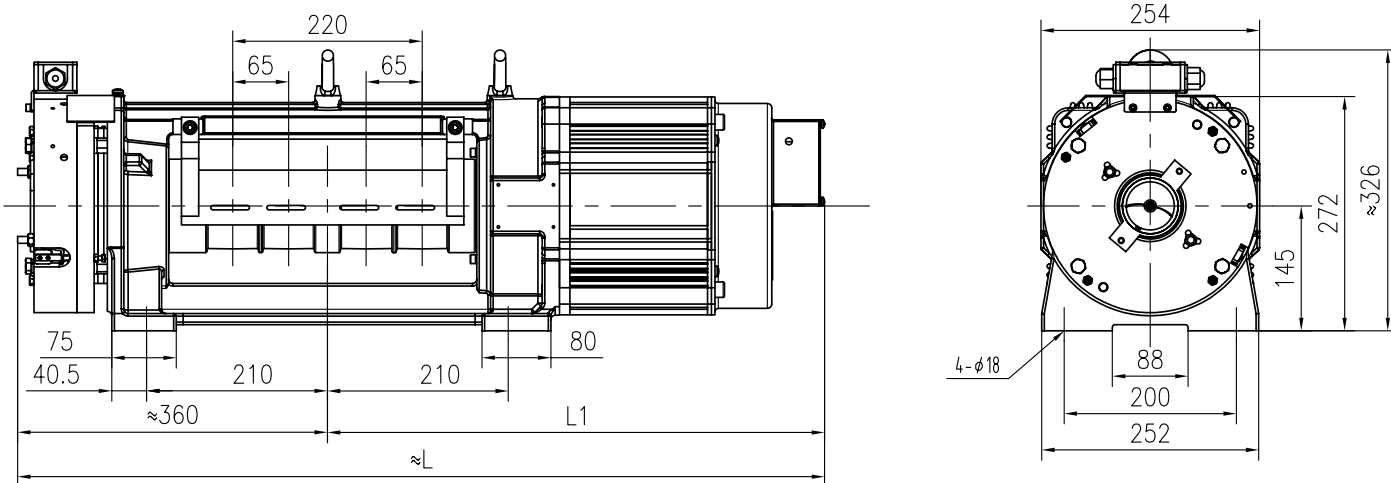
► TDS-IBM05



BELT ELEVATOR TRACTION MACHINE

Suspension	2 : 1
Voltage	380V
Pole	8
Rating	S5 (40%)
INS. Class	F
IP Code	IP41
PZ300C Brake	DC110V 1.9A
Max. Static Load	2500 kg
Weight	180 kg

► DIMENSIONS



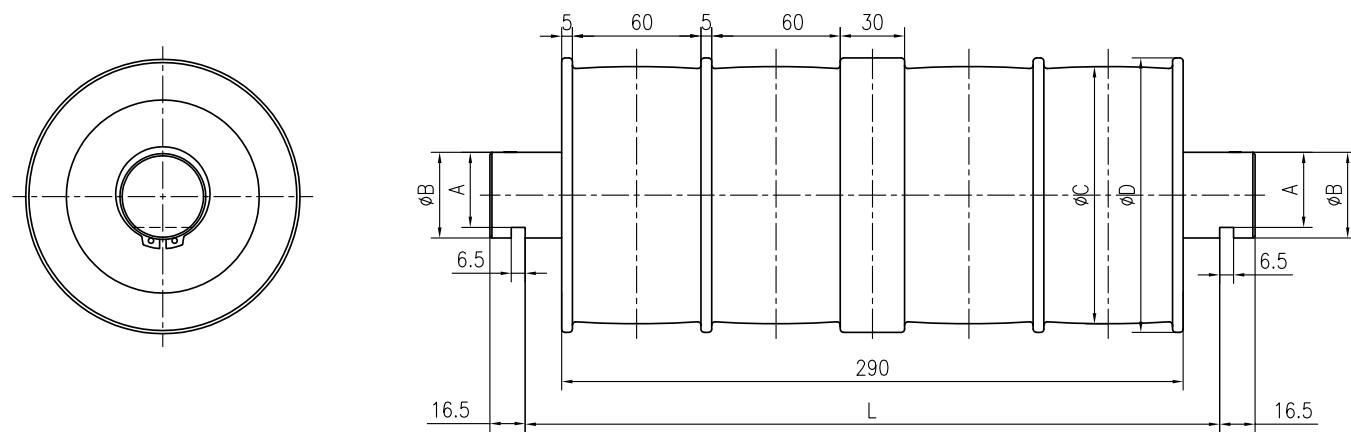
TECHNICAL DATA

Spec	Load (kg)	Lift Speed (m/s)	Sheave Dia.(mm)	Belt: quantity × width(mm)	Current (A)	Torque (Nm)	Rated Speed (rpm)	Frequency (Hz)	Power (kW)	L1	L
TDS-IBM05-61P0		1.0			9.5	105	371	24.7	4.1		
TDS-IBM05-61P5	680	1.5	Φ100	3x30	13.4	105	556	37.1	6.1	520	880
TDS-IBM05-61P7		1.7			15.6	105	649	43.3	7.1		
TDS-IBM05-81P0		1.0			11.9	135	371	24.7	5.2		
TDS-IBM05-81P5	884	1.5	Φ100	4x30	17.1	135	556	37.1	7.9	575	935
TDS-IBM05-81P7		1.7			20	135	649	43.3	9.2		
TDS-IBM05-101P0		1.0			15	175	371	24.7	6.8		
TDS-IBM05-101P5	1020	1.5	Φ100	4x30	23.1	175	556	37.1	10.2	575	935
TDS-IBM05-101P7		1.7			26	175	649	43.3	11.9		
TDS-IBM05-111P0		1.0			16.6	190	371	24.7	7.4		
TDS-IBM05-111P5	1156	1.5	Φ100	4x30	24.4	190	556	37.1	11.1	585	945
TDS-IBM05-111P7		1.7			26.4	190	649	43.3	12.9		

REMARK

1. For machine room less, the standard configuration of this machine does not include manual brake release. Customers are required to provide their own electric brake release device.
2. The manual brake release is optional to provide if the customer need it.

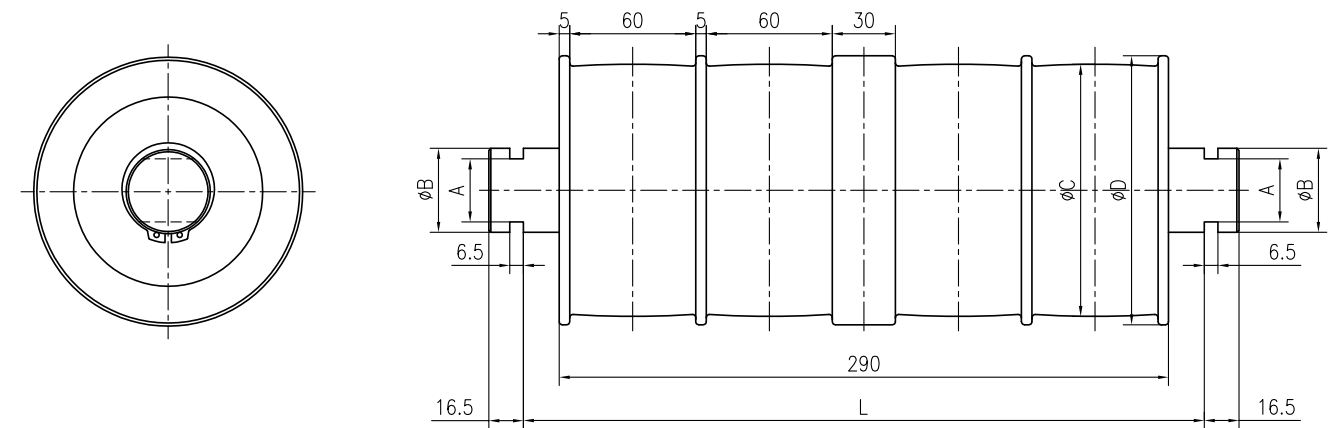
Accessories For IBM05
CWT SUSPEN SHEAVE ASSY



	A(mm)	B(mm)	C(mm)	D(mm)	L(mm)
CWT SUSPEN SHEAVE ASSY (4 BELT)	35	40	120	128	324

REMARK
Please contact our technician to confirm the dimensions and parameter.

Accessories For IBM05
CAR SUSPEN SHEAVE ASSY



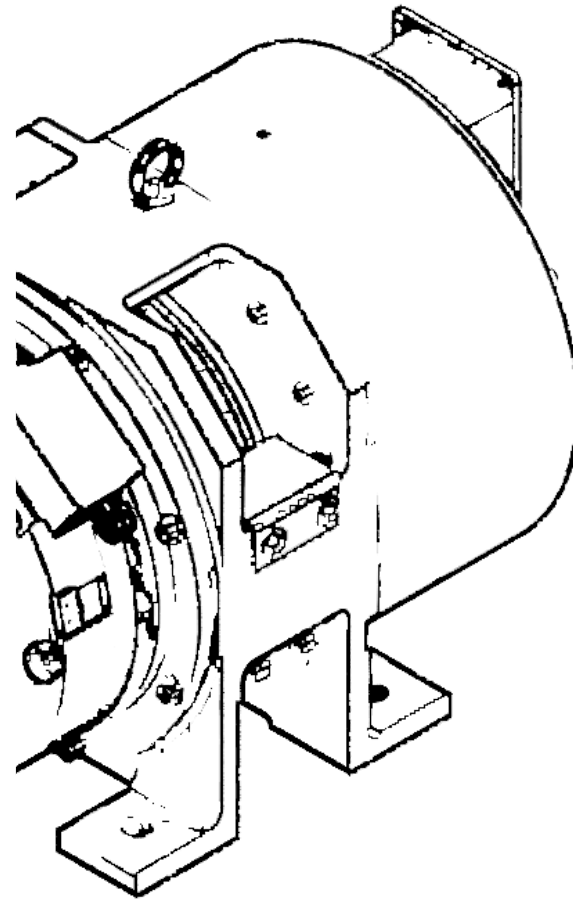
	A(mm)	B(mm)	C(mm)	D(mm)	L(mm)
CAR SUSPEN SHEAVE ASSY (4 BELT) (MRL)					
DEF SHEAVE ASSY (4 BELT) (MR)	30	40	120	128	324
IDLE SHEAVE ASSY (4 BELT) (MR)					
CAR SUSPEN SHEAVE ASSY (4 BELT) (MR)	39	55	160	168	

REMARK
1. Please contact our technician to confirm the dimensions and parameter.

CATALOG

HOME LIFT

SERIES



TORINDRIVE

CUSTOMER-CENTRIC INNOVATION

Download Our App

We're excited to announce
our new mobile app

Download



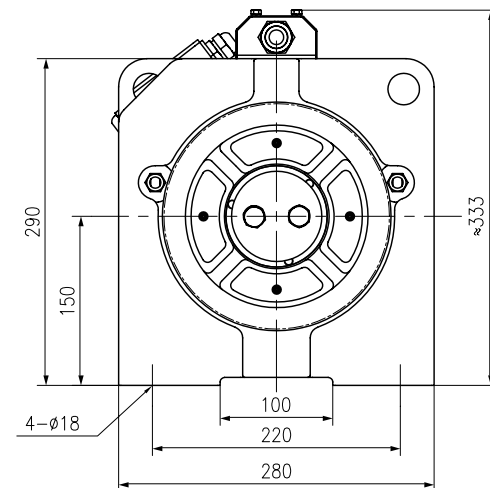
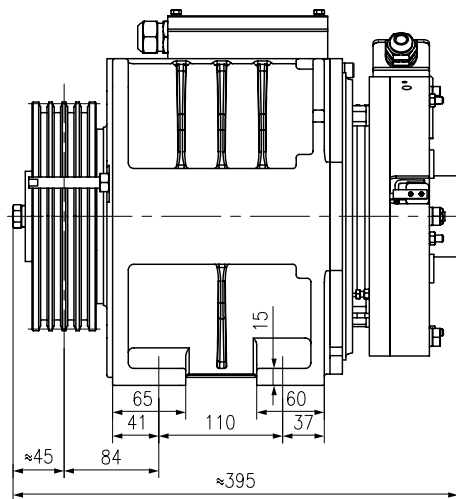


▶ TDS-HGL00

ELEVATOR TRACTION MACHINE

Suspension	2 : 1
Voltage	380V or 220V
Pole	20
Rating	S5 (25%)
INS. Class	F
IP Code	IP41
PZ300B Brake	DC110V 1.6A
Max. Static Load	1400 kg
Weight	95 kg

▶ DIMENSIONS



TECHNICAL DATA

Spec	Load (kg)	Lift Speed (m/s)	Sheave Dia.(mm)	Rope Groove (mm)	Voltage (V)	Current (A)	Torque (Nm)	Rated Speed (rpm)	Frequency (Hz)	Power (kW)
TDS-HGL00-40P4-8MM-HV	450	0.4	Φ200	4×Φ8×12	380	6.5	138	76	12.7	1.1
TDS-HGL00-40P4-8MM-LV		0.4			220	6.5	138	76	12.7	1.1
TDS-HGL00-40P4-8MM-HV	450	1.0	Φ200	4×Φ8×12	380	6.5	138	191	31.8	2.8
TDS-HGL00-41P0-8MM-LV		1.0			220	11.8	138	191	31.8	2.8

REMARK

- 1.The standard configuration of this machine does not include connection cable and manual brake release. Customers are required to provide their own electric brake release device.
2. The connection cable and manual brake release are optional to provide if the customer need them.

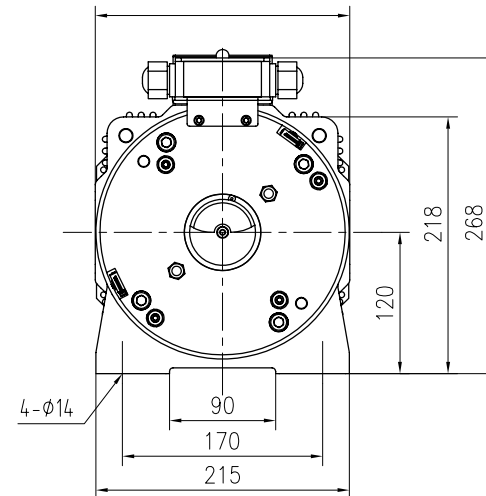
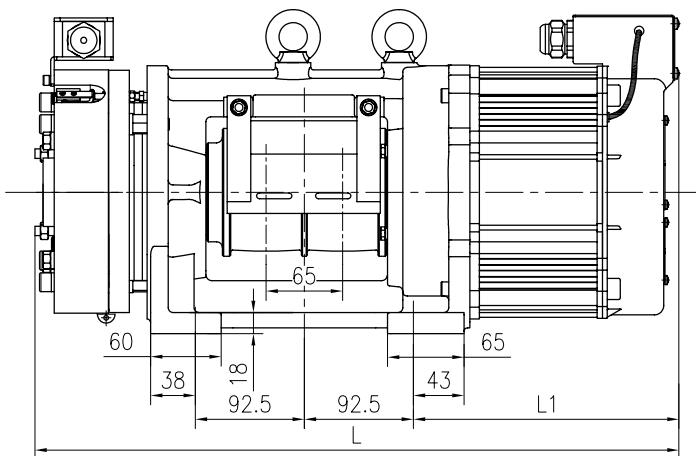
► TDS-HBM00

ELEVATOR TRACTION MACHINE



Suspension	2 : 1
Voltage	380V or 220V
Pole	12
Rating	S5 (25%)
INS. Class	F
IP Code	IP41
PZ300B Brake	DC110V 1.6A
Max. Static Load	2250 kg
Weight	100 kg

► DIMENSIONS



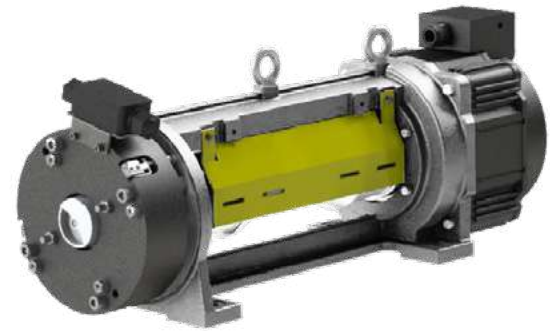
TECHNICAL DATA

Spec	Load (kg)	Lift Speed (m/s)	Sheave Dia.(mm)	Belt:QuantityX Width(mm)	Voltage (V)	Current (A)	Torque (Nm)	Rated Speed (rpm)	Frequency (Hz)	Power (kW)	L1 (mm)	L2 (mm)
TDS-HBM00-40P4DD-HV	400	0.4	Φ100	2X30	380	5.5	70	153	15.3	1.1	205	525
TDS-HBM00-41P0DD-LV		220			5.5	70	153	15.3	1.1			
TDS-HBM00-40P4DD-HV	400	1.0	Φ100	2x30	380	6.5	70	382	38.2	2.8	205	525
TDS-HBM00-41P0DD-LV		220			11.8	70	382	38.2	2.8			
TDS-HBM00-40P4D-HV	450	0.4	Φ100	2X30	380	6.2	80	153	15.3	1.3	225	545
TDS-HBM00-41P0D-LV		220			6.2	80	153	15.3	1.3			
TDS-HBM00-40P4D-HV	450	1.0	Φ100	2x30	380	7.2	80	382	38.2	3.2	225	545
TDS-HBM00-41P0D-LV		220			12.2	80	382	38.2	3.2			
TDS-HBM00-60P4D-HV	680	0.4	Φ100	2x30	380	7.8	110	153	15.3	1.8	265	585
TDS-HBM00-61P0D-LV		220			7.8	110	153	15.3	1.8			
TDS-HBM00-60P4D-HV	680	1.0	Φ100	2x30	380	9.8	110	382	38.2	4.4	265	585
TDS-HBM00-61P0D-LV		220			16.8	110	382	38.2	4.4			

REMARK

- 1.The standard configuration of this machine does not include connection cable and manual brake release. Customers are required to provide their own electric brake release device.
2. The connection cable and manual brake release are optional to provide if the customer need them.

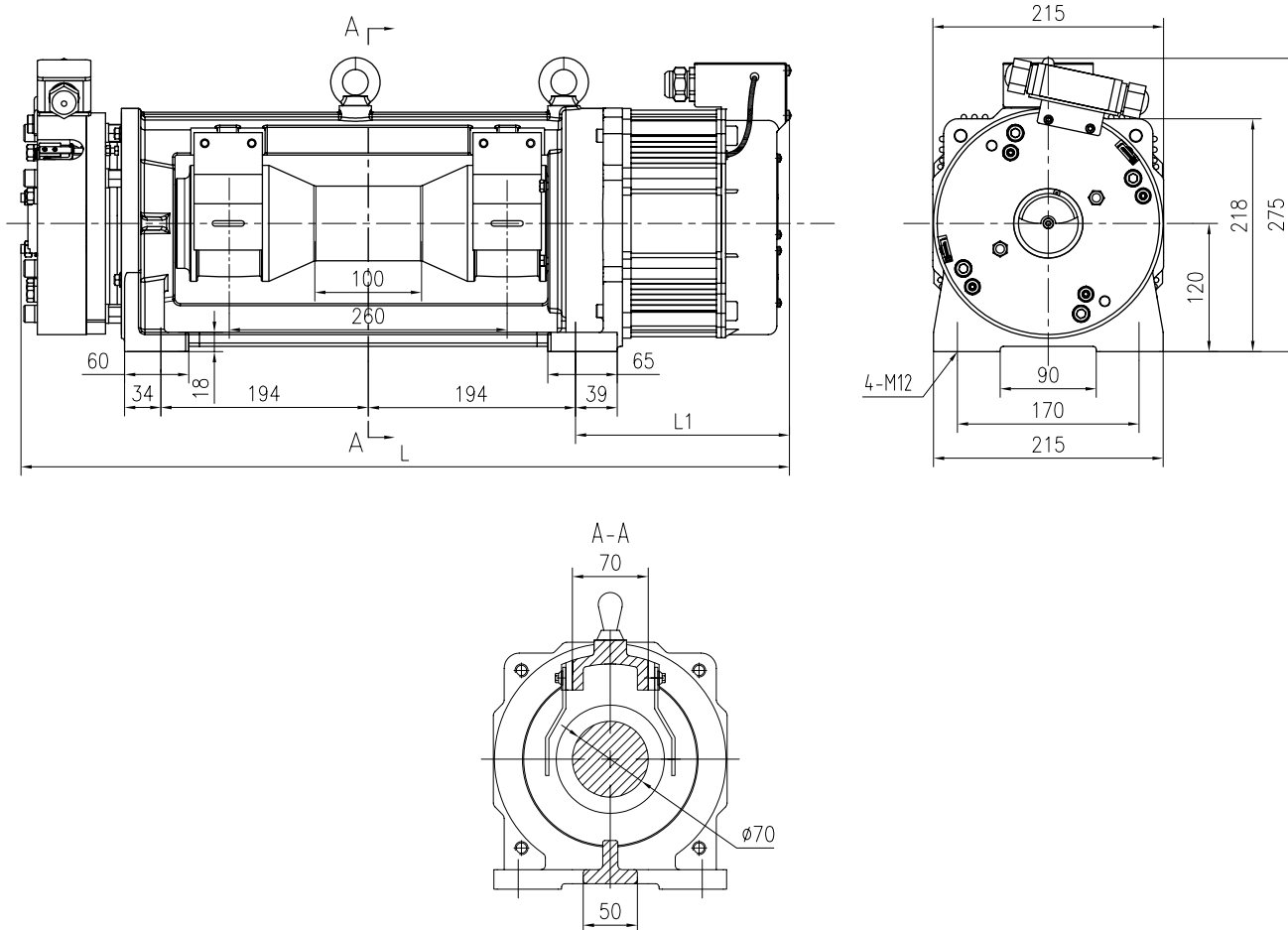
► TDS-HBM00C



ELEVATOR TRACTION MACHINE

Suspension	2 : 1
Voltage	380V or 220V
Pole	12
Rating	S5 (25%)
INS. Class	F
IP Code	IP41
PZ300B Brake	DC110V 1.6A
Max. Static Load	2250 kg
Weight	120 kg

► DIMENSIONS



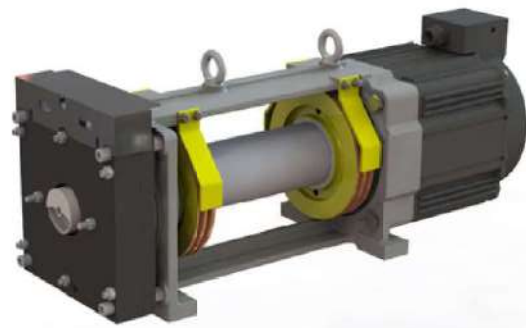
TECHNICAL DATA

Spec	Load (kg)	Lift Speed (m/s)	Sheave Dia.(mm)	Belt:QuantityX Width(mm)	Voltage (V)	Current (A)	Torque (Nm)	Rated Speed (rpm)	Frequency (Hz)	Power (kW)	L1 (mm)	L2 (mm)
TDS-HBM00-40P4C-HV	450	0.4	Φ100	2X30	380	6.2	80	153	15.3	1.3	221	740
TDS-HBM00-41P0C-LV		0.4			220	6.2	80	153	15.3	1.3		
TDS-HBM00-40P4C-HV	450	1.0	Φ100	2X30	380	7.2	80	382	38.2	3.2	221	740
TDS-HBM00-41P0C-LV		1.0			220	12.2	80	382	38.2	3.2		
TDS-HBM00-60P4C-HV	680	0.4	Φ100	2X30	380	7.8	110	153	15.3	1.8	261	780
TDS-HBM00-61P0C-LV		0.4			220	7.8	110	153	15.3	1.8		
TDS-HBM00-60P4C-HV	680	1.0	Φ100	2X30	380	9.8	110	382	38.2	4.4	261	780
TDS-HBM00-61P0C-LV		1.0			220	16.8	110	382	38.2	4.4		

REMARK

- 1.The standard configuration of this machine does not include connection cable and manual brake release. Customers are required to provide their own electric brake release device.
2. The connection cable and manual brake release are optional to provide if the customer need them.

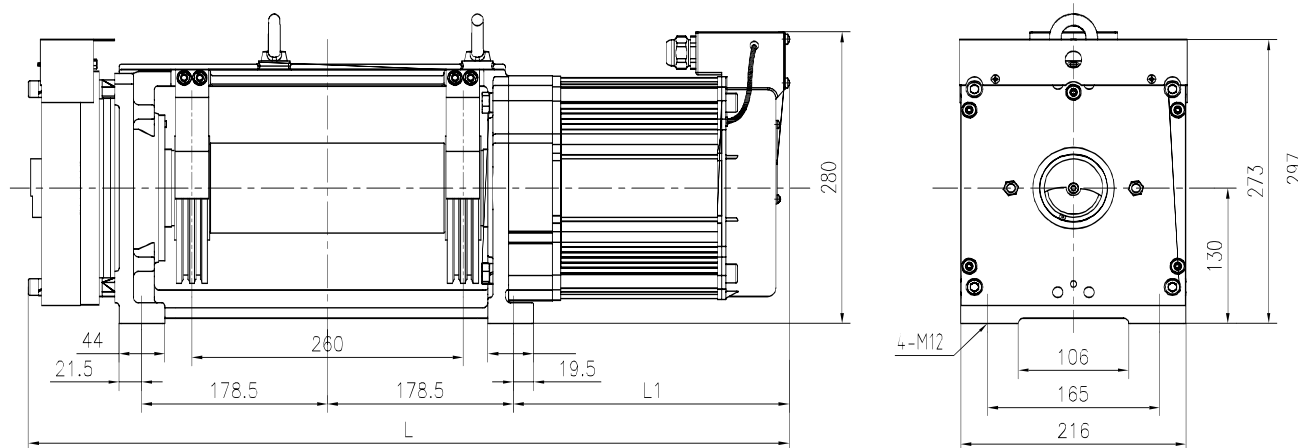
► TDS-HGL20



ELEVATOR TRACTION MACHINE

Suspension	2 : 1
Voltage	380V or 220V
Pole	20
Rating	S5 (25%)
INS. Class	F
IP Code	IP41
PZ300B Brake	DC110V 1.6A
Max. Static Load	1400 kg
Weight	95 kg

► DIMENSIONS



TECHNICAL DATA

Spec	Load (kg)	Lift Speed (m/s)	Sheave Dia.(mm)	Rope Groove (mm)	Voltage (V)	Current (A)	Torque (Nm)	Rated Speed (rpm)	Frequency (Hz)	Power (kW)	L1	L
TDS-HGL20-40PAD	408	0.4	Φ160	2×Φ6×12	380 or 220	66.8	110	95	9.5	1.1	215	680
TDS-HGL20-41PAD		1.0			380	6.5	110	239	23.9	2.8	215	680

REMARK

- 1.The standard configuration of this machine does not include connection cable and manual brake release. Customers are required to provide their own electric brake release device.
- 2.The connection cable and manual brake release are optional to provide if the customer need them.



TDS-SDM05

PERMANENT MAGNET SYNCHRONOUS POSITIVE DRIVE MACHINE

Suspension	1 : 1
Voltage	380V or 220V
Pole	8
Rating	S5 (25%)
IP Code	IP41
DZE-9EA Brake	DC110V 1.04A
Max. Static Load	1200 kg
Weight	280 kg



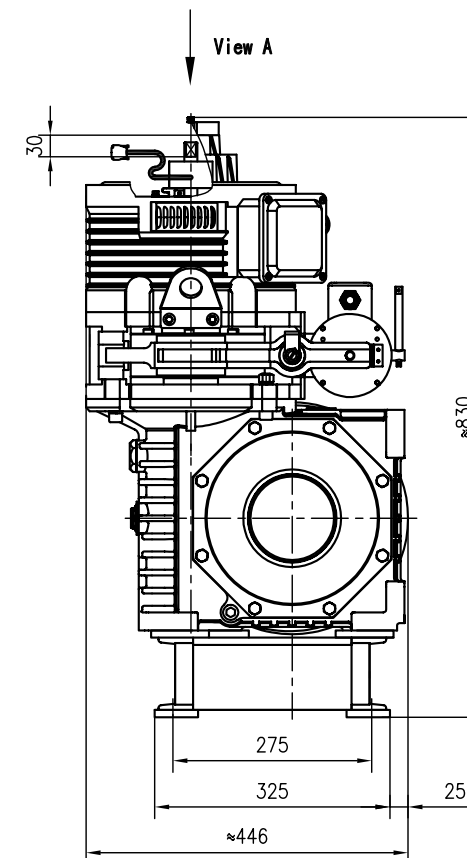
TECHNICAL DATA

Load+Cabin Weight (P+Q) (kg)	Lift Speed (m/s)	Ratio	Drum Wheel (Pitch diameter (mm)×Wire rope diameter(mm)×Rotation direction×Maximum lifting height(m))	Motor Voltage (VAC)	Motor Current (A)	Motor Speed (rpm)	Motor Power (kW)	L1	L2	L3	L4
1000	0.4	49:2	Φ 318× 8×Right/Left-handed rotation×12	380	8.9	588	4.5	740	645	71	30
			Φ 318× 8×Right/Left-handed rotation×15					810	715	1	100
			Φ 318× 10×Right/Left-handed rotation×12					810	715	10	100
			Φ 318× 10×Right/Left-handed rotation×15					885	790	65	175
1000	0.4	49:2	Φ 318× 8×Right/Left-handed rotation×12	220	15.5	588	4.5	740	645	71	30
			Φ 318× 8×Right/Left-handed rotation×15					810	715	1	100
			Φ 318× 10×Right/Left-handed rotation×12					810	715	10	100
			Φ 318× 10×Right/Left-handed rotation×15					885	790	65	175

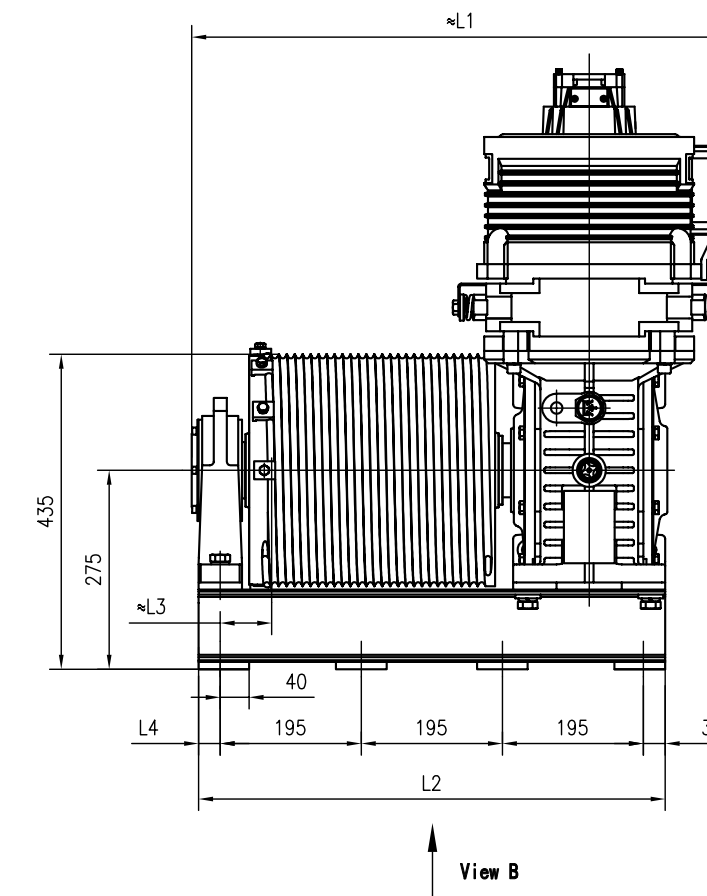
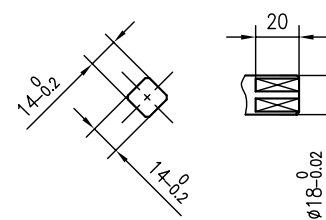
REMARK

1. As shown is right sheave type (equipped with right-handed rotation drum wheel) , left sheave type is optional (equipped with lift-handed rotation drum wheel) .

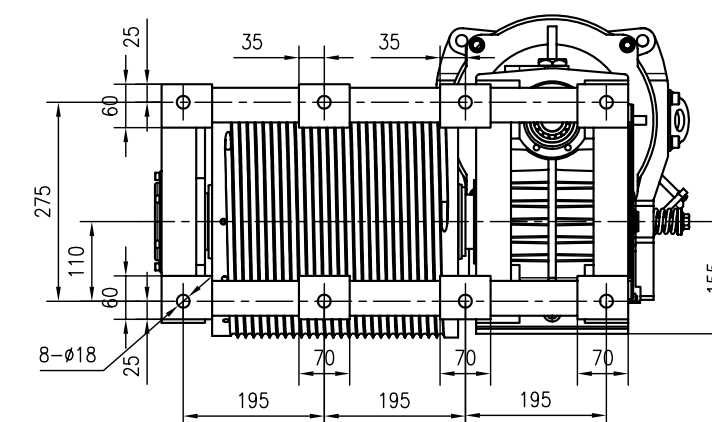
DIMENSIONS



View A/ The dimension of motor shaft end



View B/ The dimension of mounting hole





► TDS-SDM10

PERMANENT MAGNET SYNCHRONOUS POSITIVE DRIVE MACHINE

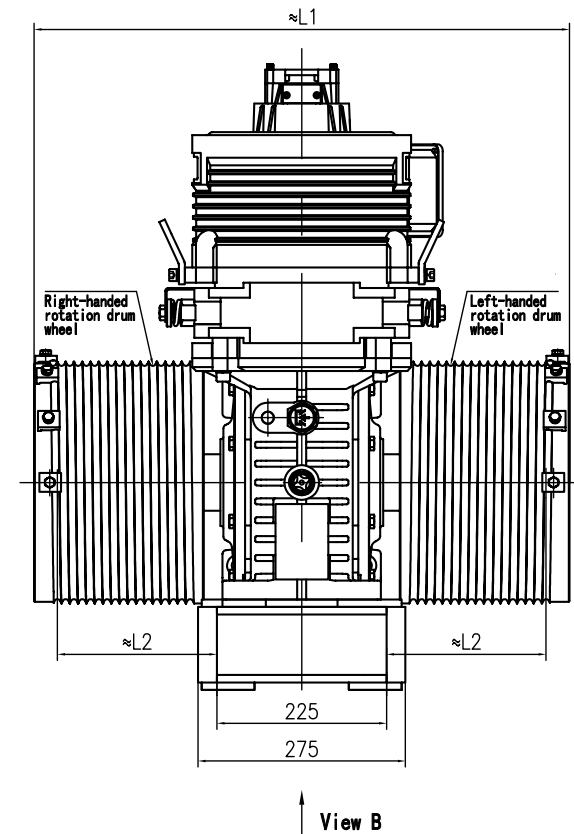
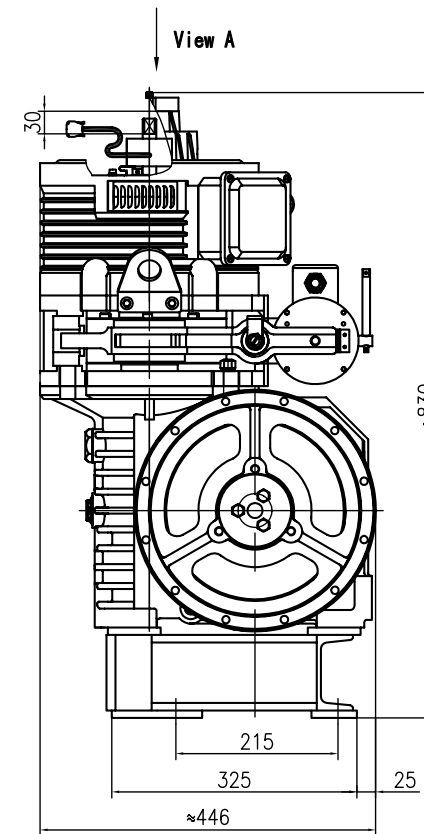
Suspension	1 : 1
Voltage	380V or 220V
Pole	8
Rating	S5 (25%)
IP Code	IP41
DZE-9EA Brake	DC110V 1.04A
Max. Static Load	1200 kg
Weight	280 kg



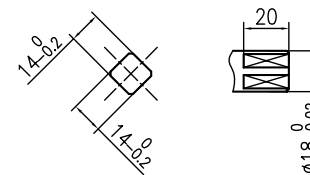
TECHNICAL DATA

Load+Cabin Weight (P+Q) (kg)	Lift Speed (m/s)	Ratio	Drum Wheel (Pitch diameter (mm) × Wire rope diameter(mm) × Rotation direction × Maximum lifting height(m))	Motor Voltage (VAC)	Motor Current (A)	Motor Speed (rpm)	Motor Power (kW)	L1	L2
1000	0.4	49:2	Φ 318× 8×Right&Left-handed rotation×12	380	8.9	588	4.5	710	212
			Φ 318× 8×Right&Left-handed rotation×15					710	212
			Φ 318× 10×Right&Left-handed rotation×12					710	203
			Φ 318× 10×Right&Left-handed rotation×15					790	243
1000	0.4	49:2	Φ 318× 8×Right&Left-handed rotation×12	220	15.5	588	4.5	710	212
			Φ 318× 8×Right&Left-handed rotation×15					710	212
			Φ 318× 10×Right&Left-handed rotation×12					710	203
			Φ 318× 10×Right&Left-handed rotation×15					790	243

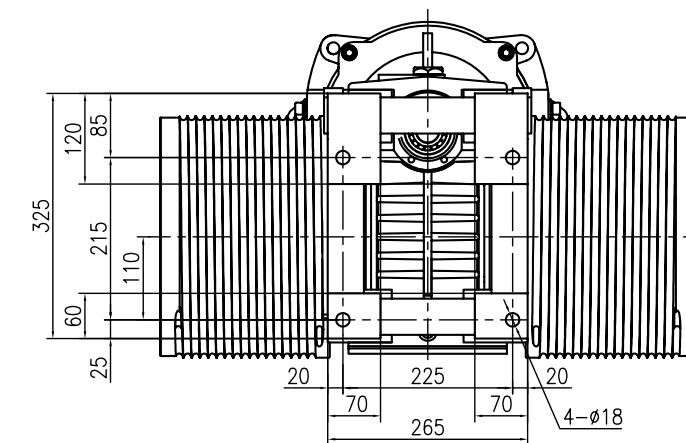
► DIMENSIONS



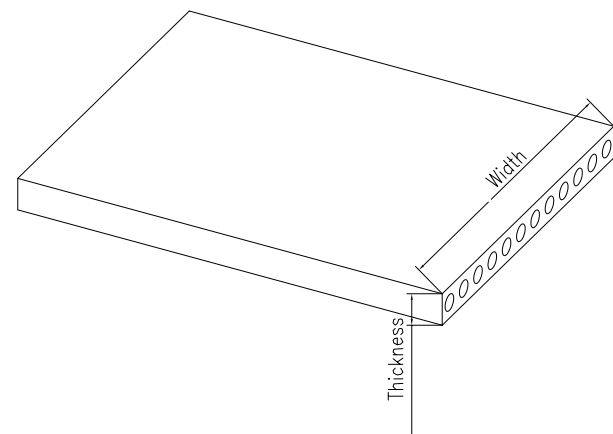
View A/ The dimension of motor shaft end



View B/ The dimension of mounting hole



ELEVATOR FLAT BELT

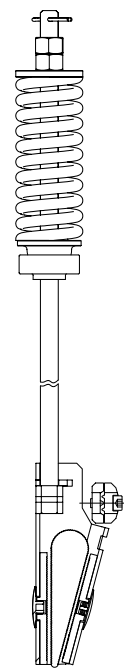


Width : 30mm
 Thickness : 3mm
 Breaking Strength : $\geq 42\text{KN}$

REMARK

Please contact our technician to confirm the dimensions and parameter.

BELT ROPE CLIP



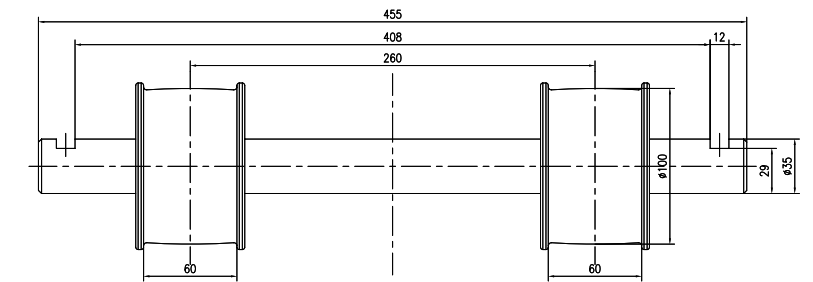
BELT BROKEN DETECTION DEVICE



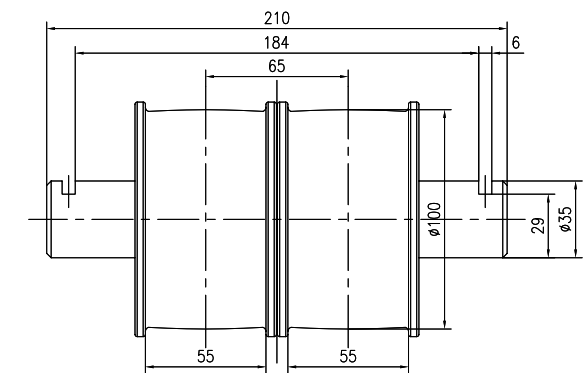
REMARK

Please contact our technician to confirm the dimensions and parameter.

BELT SHEAVE



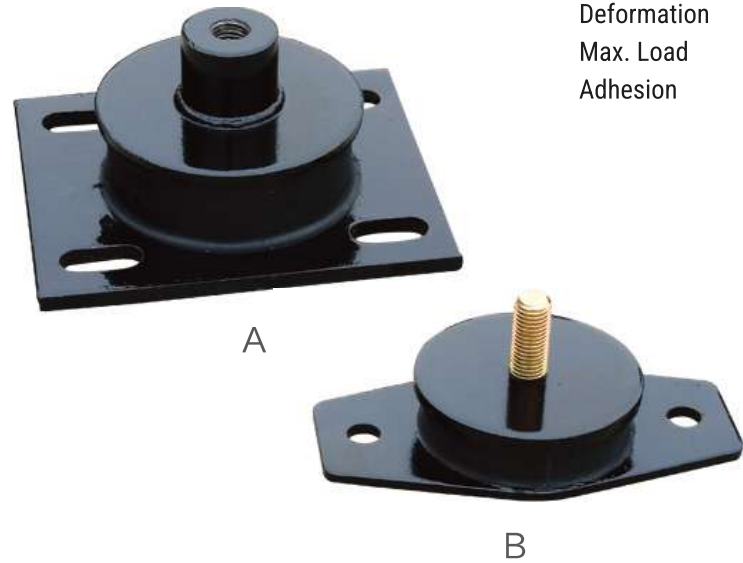
Type1



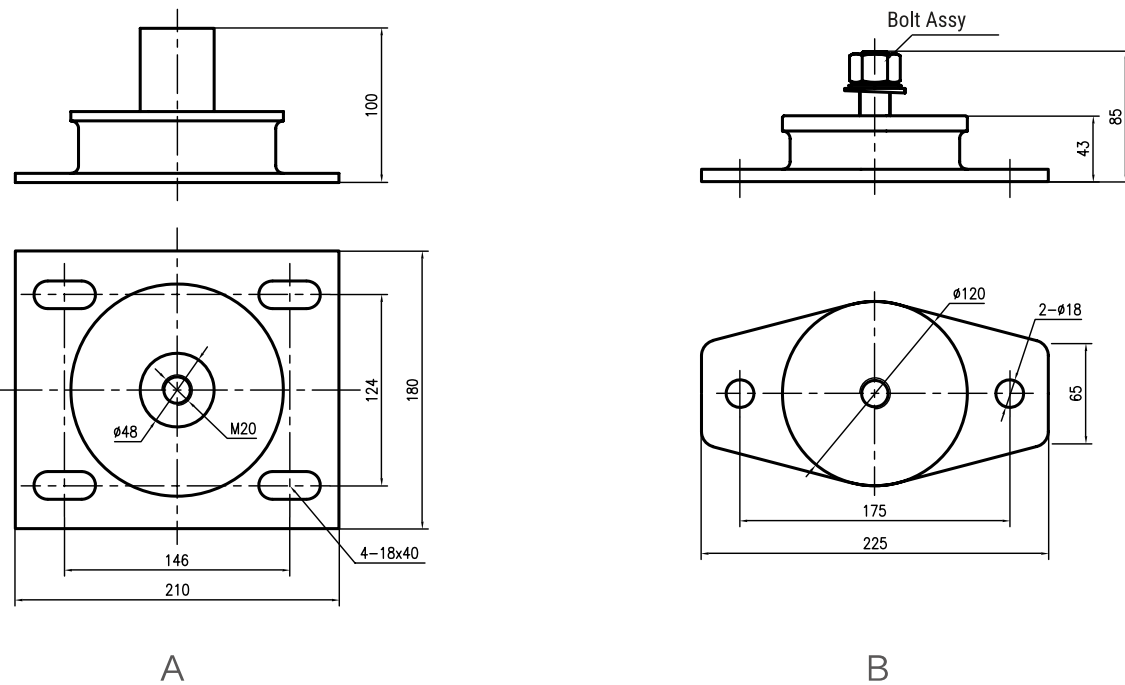
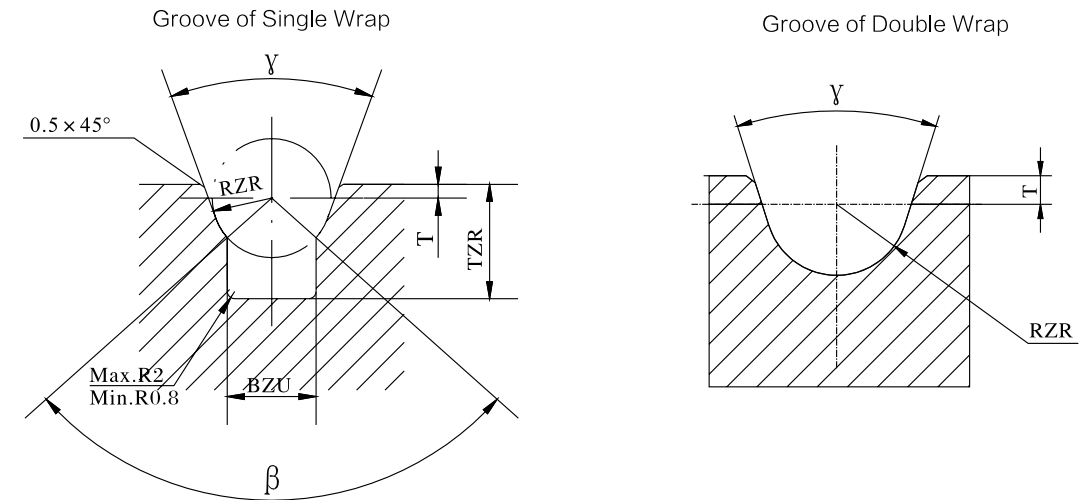
Type2

ABSORBER

Hardness HS 80±5
 Deformation 1200kg/2mm
 Max. Load 6000kg
 Adhesion ≥25kg/cm²



ROPE GROOVE

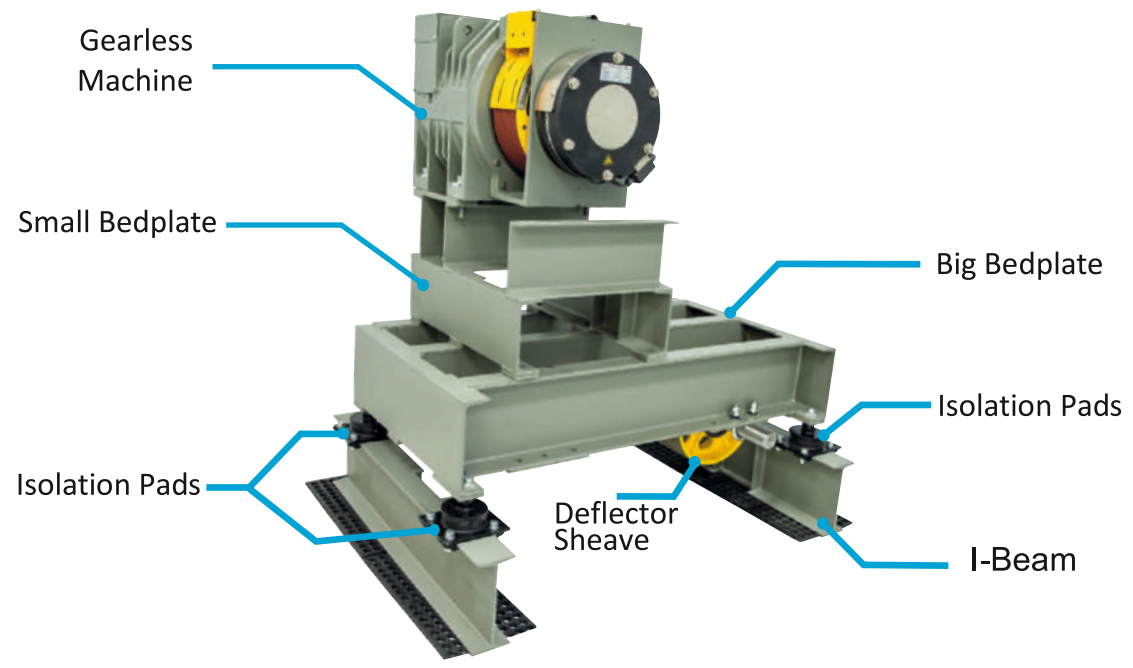


Groove	Rope	β	γ	BZU	RZR	TZR	T
Single Wrap	8	90	30	5.66	4	9.5	1.5
	10	95	30	7.37	5	12.5	1.5
	11	95	30	8.11	5.5	12.5	1.5
	12	95	30	8.85	6	12.5	1.5
	13	96.5	30	9.70	6.5	12.5	1.5
Double Wrap	10	-	35	-	5.2	-	2
	12	-	35	-	6.2	-	2
	13	-	35	-	6.7	-	2
	16	-	35	-	8.2	-	2

REMARK

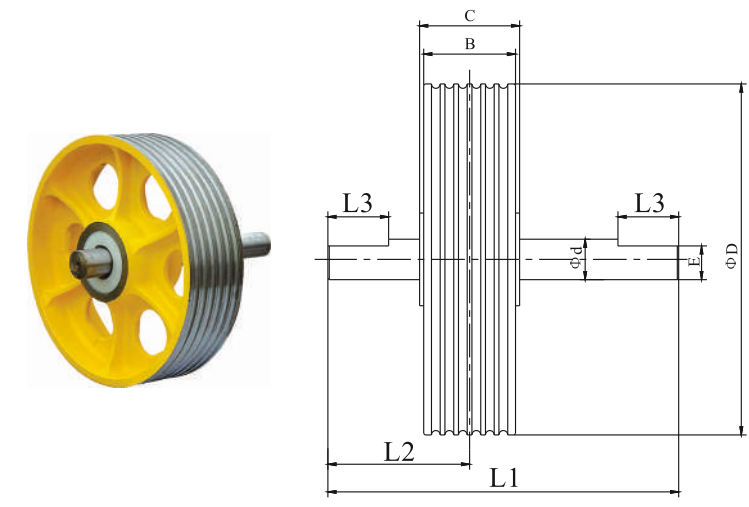
1. This is our factory standard configuration groove.
2. The user should calculate according to the elevator traction condition and the safety factor of rope.

Machine Room Solution for Gearless Machine



TDS-DSV

Need To Order **Deflector Sheave?**
Please Specify L1, L2 and L3 When Ordering.



Model	D (mm)	d (mm)	B (mm)	C (mm)	E (mm)
DSV-TDS-IGL15	340	60	78	84	50
DSV-TDS-IGL21N	400	60	90	90	50
DSV-TDS-IGL21L	400	70	135	140	60
DSV-TDS-IGL21XL	520	75	165	165	65
DSV-TDS-IGL36	520	75	165	165	65
DSV-TDS-IGL54	520	90	200	235	90
DSV-TDS-IGL55	520	75	165	165	90
DSV-TDS-IGL60	640	160	330	290	150
DSV-TDS-RGL00	340	60	78	84	50
DSV-TDS-RGL15	400	60	78	84	50
DSV-TDS-RGL21N	400	60	78	84	50
DSV-TDS-RGL25N	400	70	135	140	60
DSV-TDS-RGL40	520	90	150	150	80

TORINDRIVE



JUST CLICK & GET
Information on Your Mobile



GET IN TOUCH

(+91) 86570 51531 | 32 | 36 | 37 | 38

support.sales@torindrive-india.com

D-804, 8th floor, Vakratunda Corporate Park,
Off Aarey Road, Opp. Eco Star, Churi Wadi,
Goregaon East, Mumbai 400063.
Maharashtra, India

www.torindrive-india.com